

AUGUST 2024 • VOL. 113 | NO. 8



THE BAPTIST MESSENGER

Summer of Salvations



OKLAHOMA[®]
BAPTISTS | ADVANCING THE
GOSPEL TOGETHER

Falls Creek and CrossTimbers
Camp Wrap Up
Brian Hobbs & Jacob King

Reimagining Senior
Citizen Ministry
Bill Pierce

MESSENGER STAFF

Brian Hobbs | Editor

bhobbs@oklahomabaptists.org

Katie Brown | Ministry Assistant

kbrown@oklahomabaptists.org

Brook Daniel | Graphic Designer

bdaniel@oklahomabaptists.org

Jacob King | Staff Writer

jking@oklahomabaptists.org

Bob Nigh | Contributing Writer

bnigh@oklahomabaptists.org

CONNECT WITH US

Online | baptistmessenger.com

Twitter/X | [@baptmessenger](https://twitter.com/baptmessenger)

Facebook | [thebaptistmessenger](https://facebook.com/thebaptistmessenger)



The Baptist Messenger (ISSN 0744-9518) is published monthly by the Baptist General Convention of Oklahoma, 3800 N. May, Oklahoma City, Oklahoma 73112-6506. Periodicals postage paid at Oklahoma City, Oklahoma. Circulation last issue: 37,089. Individual subscriptions are available upon request. When writing for a change of address or a subscription renewal, please include a copy of your mailing label. POSTMASTER: Send address changes to Baptist Messenger, 3800 N. May, Oklahoma City, OK 73112-6506. Phone number is 405 942-3800

While the Baptist Messenger attempts to provide advertisers of integrity who furnish quality products, it is recommended that buyers be cautious, do research and get references to any advertiser with which they are not familiar. Publication of an advertisement in the Baptist Messenger does not constitute an endorsement of the products, services or businesses.

Member, Baptist Press News, Evangelical Press Association, Oklahoma Press Association.

INSIDE THIS ISSUE

03 | State Missions Offering

CONNECT

Todd Fisher

04 | Before & After You Vote

SWORD & TROWEL

Brian Hobbs

05 | Upcoming Events

06 | Reimagining Senior Adult Ministry

AFFILIATE

Bill Pierce

07 | A Bumpy Landing

JUST JOE

Joe Ligon

08 | Summer of Salvations

FEATURE

10 | Cooperative Program Giving Report

20 | Puzzles

21 | Church News

22 | Ministry in Focus: Augustus Smith

24 | A New Perspective

REGIONAL MINISTRY

Andy Taylor

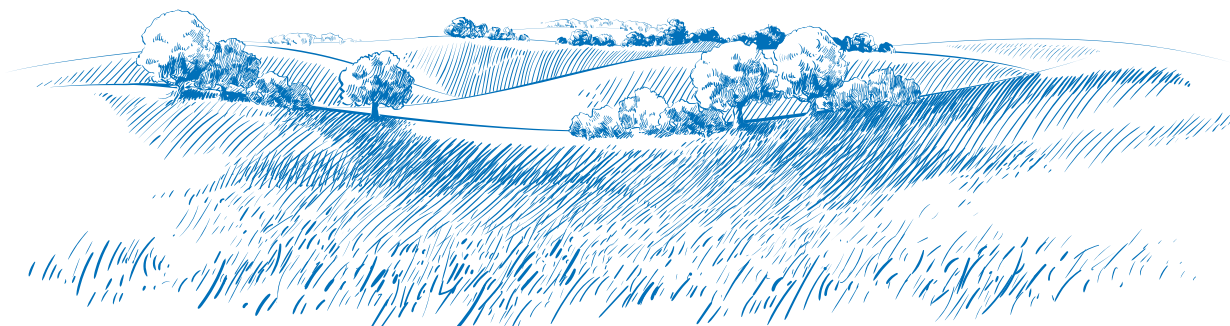
25 | Missionary Prayer Guide



EDITOR'S NOTE: On July 28, Oklahoma Baptists' Todd Fisher was involved in a serious automobile accident while traveling in Oklahoma to speak at a ministry event. Dr. Fisher has sustained multiple injuries that are not life threatening, and he is in stable condition. We ask that you pray for him, the family and for all those impacted by this situation. For more information, visit baptistmessenger.com/toddfisher.

Blessed to Give

‘IT IS MORE BLESSED TO GIVE THAN TO RECEIVE.’



Dear Oklahoma Baptists,

As I serve in my role, I am blessed and amazed to see how God is building His Kingdom through churches all across our great state. We truly are advancing the gospel together! One of the most unique and special aspects of who we are as Southern Baptists is the way we choose to cooperate. A wonderful example of this is how we come together each year to give to the Edna McMillan State Missions Offering (SMO). The SMO enables us as churches and individuals to be part of something much bigger than ourselves.

When you give to the SMO, you are making a deep and wide-ranging impact for the advancement of the Gospel here in our state and across the globe:

- When a tornado recently destroyed principal businesses in Marietta as well as the hospital and community food bank, requests for food assistance went from 40 people a week before the tornado to 250 a week afterward. SMO funds were used to provide food to help our churches meet the needs of their community and share the Gospel.
- Thanks to assistance of SMO funds, individuals with special needs are able to participate in the annual Camp Perfect Wings at CrossTimbers where they hear about Jesus' love for them and His Gospel.
- As our state grows in population and ethnic diversity, the SMO helps affinity ministries reach people of every background with the Gospel and be equipped for ministry.

These are just some of the many ways the SMO is making a difference for the Kingdom of God. Through giving to the SMO, churches can be part of incredible and far-reaching missions and ministries. We truly do more for the Kingdom cooperating, serving, and giving together!

Paul told the Ephesian elders, "In all things I have shown you that by working hard in this way we must help the weak and remember the words of the Lord Jesus, how he himself said, 'It is more blessed to give than to receive'" (Acts 20:35). As we give to this special offering, my prayer is that the Lord will use it to further strengthen the work He is already doing in Oklahoma and around the world.

Serving Jesus with You,



Todd Fisher
Oklahoma Baptists
Executive Director- Treasurer



Scan here for more information about



EDNA MCMILLAN
**State Missions
Offering**



Americans are spending a vast amount of time, money and energy focused upon who will be the next President of the United States of America.

This is indeed an election of historic proportions. Many are involved financially or personally in these or other political campaigns this 2024 Election cycle. Still others have spent a considerable portion of their reputation, speaking out in person or online for a particular candidate, passionately pleading for others to follow suit.

All of these converging factors and efforts arrive at a decision point on Election Day. On Tues., Nov. 7, registered voters of all parties will have their opportunity to cast a ballot for President and other key offices and issues. Here are a few thoughts entering the 2024 Election Day.

BEFORE YOU VOTE

This election cycle has been an especially tumultuous one. Politics is always going to have its drama, yet this campaign season has been home to an unusually high level of chaos.

We should commit all of these serious matters going on in America and around the world to the Lord in prayer. Christians can stay focused and serve as a light. Going into the voting booth, we each need to do homework on all that's before us—from candidates to state questions to judicial retention votes.

Oklahomans can find all kinds of help resources at this website <https://oklahoma.gov/elections>. This webpage offers information about how to register to vote, lists of announced candidates, and sample ballots, as well as an election calendar.

Whether it's the President, Congress, voting on retaining (or not retaining) Oklahoma Supreme Court judges or the Legislature, take time to pray and seek the Lord.

As you do your homework, truly pray that the Lord's will would be done on Earth as it is in Heaven.

AFTER YOU VOTE

Picture it now. Election Day has come and gone, and we know how Americans voted in the various races. Within months, these elected officials will be sworn into office.

For many, Election Day will bring as many deep disappointments as it will rejoicing. Maybe the election went just as you hoped, maybe it went just as you had feared.

If these deep disappointments occur, don't panic. Instead, take moments to reflect and pray. Also consider other people that you may have offended during the election season and think what the Lord would have you do.

Let's each set aside the time to seek the Lord's leading in your vote. Pray, then vote, then pray more. The future course of our country depends on such prayers.

Lastly and above all, this Election Day and beyond, let's advance the Gospel. God help us...



Brian Hobbs
*Oklahoma Baptists
Editor*

UPCOMING events

See what events are happening around the state!



August 24

The Call Conference
Oklahoma Baptist University
oklahomabaptists.org/youth/evangelism/the-call-conference/



September 14

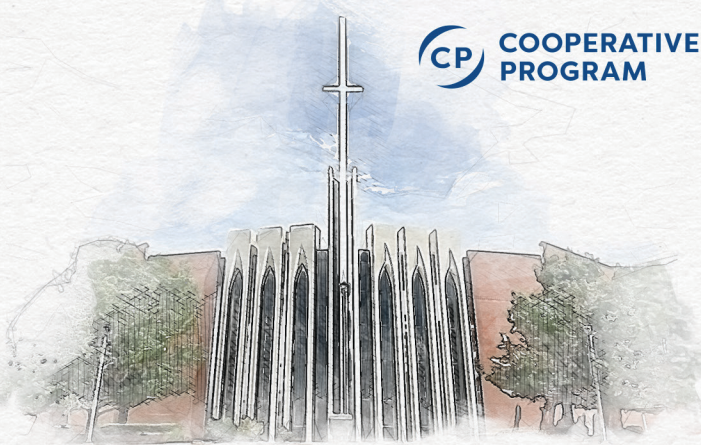
OKYM Girls Conference
OKC, Emmaus
oklahomabaptists.org/event/okym-girls-conference-2/

**OKLAHOMA
BAPTISTS**

Save the Date
2024 ANNUAL MEETING

November 11-12
First Baptist Church of Moore

**CP COOPERATIVE
PROGRAM**



**FEEDING
& LEADING**

A PODCAST FEATURING TODD FISHER & ANDY TAYLOR

Developing and Growing Key Relationships EPISODE 50

Relationships form the foundation of pastoral ministry and leadership. Todd and Andy discuss how to develop the key relationships in the church that will keep your leadership moving forward.

LISTEN AT

oklahomabaptists.org/podcast
or on...



2024 DPA GALA
For The Love of Adoption
08.29.2024

**BUY
TICKETS
NOW!**



**SPECIAL GUEST:
STEVEN CURTIS CHAPMAN**





Does your church have a focus on reaching, discipling and engaging senior adults in missions? The fields are certainly white unto harvest. The number of unreached senior adults is growing rapidly.

The Bill and Susan Pierce Institute for Transforming Life Expectancies helps churches and senior adults prioritize this evolving area of ministry. My good friend Greg McNeece is the Executive Director of the Institute.

The world says to retire. Sadly, sometimes Christians apply the word retire to serving the Lord. People may reflect a "I've done my part" attitude. Surprisingly, even the church sometimes sends signals to senior adults that "you've done your part".

But God's Word teaches that spiritual gifts are for all of life and, the great commission is always the mission. Senior adults should lean in to serving the Lord, not retire from it. Using our spiritual gifts is not only vital to our maturity as a Christian but it undergirds the health of the church. *"O Magnify the Lord with me and let us exalt His name together."* Psalm 34:3

I heard about a 77-year-old and a 19-year-old that went on their first mission trip. Both the older person and the younger person were changed by God in amazing ways. They learned that serving the Lord is never about age. It is about our heart being willing and prepared to serve. What a wonderful opportunity we all have to advance the gospel, regardless of age.

What if we changed our minds (transformed our life expectancies) about what we emphasize in senior adult ministry as we move into the future? In the 1960's, when the number of teenagers was growing rapidly, churches

began to engage youth ministers. The emphasis was on evangelism, discipleship and missions (which it still is in youth ministry).

Now that the number of senior adults is growing rapidly, shouldn't we re-think our focus? Should we engage senior adult leaders who encourage, equip and train senior adults to focus on evangelism, discipleship and missions?

The Pierce Institute is hosting a conference in the fall of 2024. The conference will bring together key leaders who serve in senior adult ministry. A primary focus will be reimagining ministry among this age group. I believe senior adult ministry has a bright future.

Senior adults appear to be ready to mobilize and advance the gospel. In Listening Sessions the Pierce Institute is holding around the state, senior adults are telling us they value relationships and that relationships are key to reaching people for Christ. They also tell us that only about 20% of the older adults in their communities attend church even once a month.

Let's consider what happens when we begin to reimagine senior adult ministry. A new day really does call for a new way. Let's focus on evangelism, discipleship and missions. Let's transform our life expectancies in the area of senior adult ministry.



Bill Pierce
Baptist Villiage Communities
President



A Bumpy Landing

Several years ago when I was the pastor at Marlow, First, the church made an important decision to commit to mission work in the beautiful country of Ecuador. We took several trips there throughout multiple years. If you haven't been there, you should go. It is beautiful.

There was one trip in particular I often think about. We flew from Oklahoma City to Houston and then from Houston to Quito, Ecuador. That was back in the good old days when you could actually count on connecting flights to be relatively on time and get you to your destination.

I guess I should admit that I don't fly well. In fact, I walk better than I fly. It takes me longer, but I can usually get to my destination. For those of you who are wondering, I actually walk better than I run unless there is a bear chasing me. In fact, there is a direct correlation between how fast I can run and how big the bear is. But I have digressed...

We were on the plane in Houston waiting to take off for Quito. I was sitting towards the back of the plane next to one of our medical doctors from church. Across the aisle from me sat a wonderful Ecuadorian couple.

We hadn't been in the air very long when we began to encounter a little turbulence. There is nothing like turbulence to sharpen up your prayer life. So, I prayed. Then I peeked with my left eye at the Ecuadorian couple sitting across the aisle from me. The little lady was reading from a pocket New Testament. I remember thinking that was so cool and, wouldn't you know it, before long, the turbulence stopped.

We flew for a while longer and suddenly got into some real turbulence. The Ecuadorian man pushed the button to summons the flight attendant. She came back to where they were sitting, had a short conversation, left,

and quickly returned with one of those airplane-sized bottles of Jack Daniels whiskey. The little lady got the bottle opened and swigged the whole thing down in one swallow. I have often wondered if she decided since the Holy Spirit might not be able to get her back home, if some spirits might be the help she needed.

Oddly enough, the plane didn't calm down. But the little Ecuadorian lady went smooth to sleep. That is until we were ready to land in Quito. At the time, Quito was one of the most dangerous airports in the world. And the landing that night did not disappoint. We hit the runway pretty hard and bounced back up in the air. I didn't know if I needed to ask the Holy Spirit to help me or have a snort of some Jack Daniels. About then, the plane hit the runway a second time. It was then that little, inebriated Ecuadorian lady reached across the aisle, grabbed my hand, and we held hands all the way to the terminal.

When we got to the terminal, she turned me loose and said, what I think was "Thank you." I am not sure what her husband said, but I don't think it was thank you. But we all made it there alive, ready to walk or run (you have to keep your eyes on those Ecuadorian bears) to our next destination.

So, here's the deal. Adult alcoholic beverages don't solve turbulence in our lives, but the Holy Spirit sure can. If you are coming in for a hard landing, it is always nice to have someone to hold your hand. Not everyone appreciates hand holding, especially among strangers. Terminals sure are misnamed.



Joe Ligon
Oklahoma Baptists
Sr. Associate Executive Director

Summer of Salvations

Falls Creek Sees Numerous Decisions

2024 Falls Creek was a massive success, seeing many students make decisions to leave the world behind and follow Jesus. In total, 5,543 decisions were made with 2,686 professions of faith, 113 assurances of salvation, 1,427 recommitments, 560 calls to ministry and 757 baptisms, special prayers or other decisions. The camp featured a notable slate of speakers who challenged students through their sermons to focus their lives fully on God!

"Numbers certainly aren't everything and Oklahoma Baptists should commit themselves to praying for students who made a decision to follow through in commitment and be an active part of a local church," said Todd Sanders, Falls Creek program director. "But these numbers reveal the amazing work of God in the lives of students."

This year, the theme for Falls Creek was "Totally". Some may recall the use of the word by stereotypical surfers in the 1980s. In reality, the theme describes the nature and character of God. The theme was selected "to help students take a journey into and respond to the truths of who God is," said Sanders.



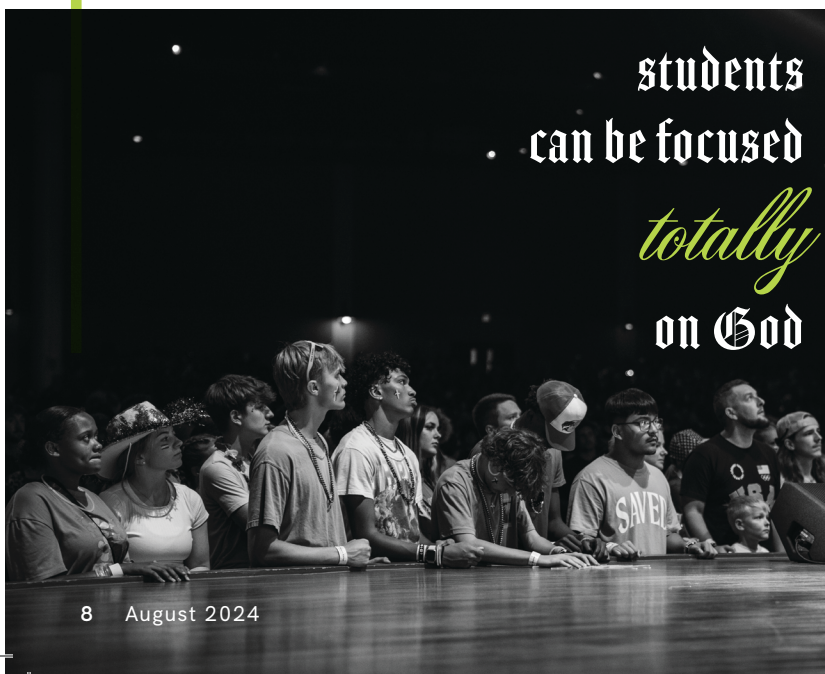
"In a world that is uncertain, that is always changing, that is volatile, our God is totally different," Sanders said. "We want to help students respond to the truths of who God is and be more anchored (in Him) in a culture that provides few anchors."

Psalm 139:17 was the theme verse for 2024, *"How precious to me are Your thoughts, O God! How vast is the sum of them!"* The focus of most sermons were how students can be focused "Totally" on God, serving and growing in Him. In addition to the excellent speakers hosted at Falls Creek, worship leaders from across the state and country were also featured.

Thousands of students attended the various breakout sessions throughout the summer. These sessions covered complex topics and helped students grow spiritually. Breakout sessions are offered in addition to the main camp sessions and they are an incredible way for students to deepen their knowledge of God's Word and strengthen their walk with our Heavenly Father.

Missions Mobilization returned as an emphasis which connected campers with various sending opportunities. A new feature focused on Disaster Relief (DR) and made students and leaders aware of the importance of this Oklahoma Baptists ministry. Students packed 12,000 first contact bags for Disaster Relief which included supplies for those affected by disasters in Oklahoma as well as inspiring messages of hope.

This year, Falls Creek had a "totally" great summer, and leaders are looking forward to see what God has planned for next year. More information about the Falls Creek youth weeks can be found at oklahomabaptists.org/youthcamp.



CrossTimbers 2024: Lives Made New

2024's CrossTimbers Children's Mission Adventure Camp saw numerous students make decisions to follow Christ. This year's theme for the camp was "Made New", based on 2 Cor. 5:17, *"Therefore, if anyone is in Christ, he is a new creation: the old has passed away, and see, the new has come!"* Throughout the summer, CrossTimbers had 12 sessions consisting of four days each with their own guest speaker who helped nourish and enrich the students' understanding of God's word.

In total, 628 decisions were made including 345 professions of faith, 59 assurance of salvations, 64 rededications, 11 calls to ministry and 149 other decisions, baptisms and prayer requests.



The camp's theme focused on what it means to be made new in Christ and how our relationship with God can be restored. Students studied God's Word and discussed how we are all sinners but are Made New when we ask Jesus to be our Boss, our Lord.

"This summer we've seen God move in incredible ways," said Program Director of CrossTimbers, Sarah Hagar. "We've seen kids make Jesus the Boss of their life."

Each day of each session focused on a different part of 2 Cor. 5:17, showing students how to be Made New through Christ and how He continually makes us new day by day. Outside of the scheduled chapel times, students were also given opportunities to discuss what they learned with other campers and how the Word impacted them personally.

"We've had a lot of kids ask some really good questions," said Hagar. "There are always kids asking their sponsors and tribal leaders spiritual questions."

At the camp, students learn biblical principles, create and strengthen relationships and experience nature in a fun and safe environment. In addition to helping students strengthen their walk with Christ, CrossTimbers hosts three missions stops each year. These focus on a ministry or missionary family in Oklahoma, North America and around the world. This helps the students better understand the missions field and the countries which host missions.

"If we want to see people serve the nations, we have to teach them about those who have served and are serving now," said Hagar.

Students participate in fun and engaging activities including crafts, games, activities and food and drink tasting that help to connect them to the mission areas. This year Disaster Relief, Nicaragua and the landlocked South African country of Lesotho (pronounced luh-soo-too) were the subjects of focus.

"I hope to see God continue to move here and for years to come," said Hagar. "I love that they get to learn about missions as well and I hope they continue to learn."

Registration for CrossTimbers 2025 opens the first Monday of November. CrossTimbers is supported by the Cooperative Program.

by Messenger Staff





COOPERATIVE PROGRAM

January through June 2024 Giving Report

Dear Oklahoma Baptists,

Together we are advancing the gospel in our state and across the globe. A major part of our gospel impact is the Cooperative Program (CP), which enables a church of any size in any location the opportunity to be part of something greater for the Kingdom of God than it could be by itself.

Most of our churches could not afford on their own to fully support even one family on the international mission field. But through the CP and Lottie Moon Christmas Offering, there are more than 3,600 men and women serving as fully funded missionaries with the International Mission Board along with their 2,700 children. The CP enables the planting of many new churches every year and chaplaincy work through the North American Mission Board. It helps support our six seminaries, making it possible to give SBC students training for ministry significant discounts in tuition.

Closer to home, Oklahoma Baptist churches give through the CP to also support ministries like: Falls Creek, where this summer many students committed their lives to follow Christ; CrossTimbers where children hear the gospel and are taught about the importance of missions;

Baptist Collegiate Ministries on 40 Oklahoma college campuses where students are coming to faith in Christ and being disciplined; Disaster Relief where people experiencing some of their most difficult hours after a natural disaster are helped, encouraged and told about the love of Jesus by our volunteers meeting their physical needs. In addition, our state convention is able to provide resources, services, conferences, retreats and other ministry to Oklahoma Baptist churches and pastors because of the CP. The gospel ministries of our affiliates OBU, OBHC, BVC, and WatersEdge are also helped through CP giving.

In the following pages, you can see a mid-year report on giving from January through June of how together we have advanced the gospel through the CP. I am thankful for every church in our state convention who so faithfully serves and gives.



Serving Jesus With You,
Dr. Todd Fisher
Executive Director-Treasurer
Oklahoma Baptists

Missions Giving at a Glance

JANUARY - JUNE COMPARISON	2024	2023
COOPERATIVE PROGRAM	12,254,934	12,172,210
2024 over 2023	82,724	
Percent Difference	0.68%	
EDNA MC MILLAN	289,084	250,910
2024 over 2023	38,174	
Percent Difference	15.21%	
ANNIE ARMSTRONG	1,607,574	1,558,240
2024 over 2023	49,334	
Percent Difference	3.17%	
LOTTIE MOON	3,226,089	3,071,596
2024 over 2023	154,493	
Percent Difference	5.03%	

Church	2024	2023
Arbuckle Association		
BYARS	\$1,569.29	\$2,191.62
DAVIS, COMMUNITY	\$0.00	\$0.00
DAVIS, FIRST	\$7,098.68	\$5,890.30
DAVIS, IMMANUEL	\$429.60	\$0.00
DOUGHERTY, FIRST	\$0.00	\$570.00
ELMORE CITY, FIRST	\$28,087.41	\$39,077.64
ELMORE CITY, KATIE VICTORY	\$524.74	\$696.64
HENNEPIN, FIRST	\$3,547.02	\$3,563.72
HICKORY, FIRST	\$5,790.60	\$3,820.80
LINDSAY, CALVARY	\$10,047.69	\$11,130.16
LINDSAY, ERIN SPRINGS	\$6,020.32	\$6,917.77
LINDSAY, FIRST	\$28,681.81	\$35,147.79
LINDSAY, HUGHES	\$282.00	\$561.00
MAYSVILLE, FIRST	\$10,562.44	\$11,390.80
MAYSVILLE, STORY	\$3,305.24	\$0.00
PAOLI, FIRST	\$4,933.55	\$4,785.51
PAULS VALLEY, BEATY	\$11,649.54	\$9,934.77
PAULS VALLEY, FIRST	\$10,487.03	\$10,459.05
PAULS VALLEY, GRACE	\$0.00	\$0.00
PAULS VALLEY, LOVE	\$0.00	\$0.00
PAULS VALLEY, PRIMERA HISPANIC	\$0.00	\$300.00
PAULS VALLEY, TRINITY	\$53,614.35	\$39,231.81
ROSEDALE, FIRST	\$7,304.94	\$5,082.24
STRATFORD, FIRST	\$13,776.62	\$11,214.46
SULPHUR, CALVARY	\$2,861.51	\$3,451.57
SULPHUR, CENTRAL	\$14,806.01	\$3,310.35
SULPHUR, CROSSWAY FIRST	\$3,000.00	\$4,500.00
WYNNEWOOD, FIRST	\$5,138.39	\$5,220.25
WYNNEWOOD, JOY	\$387.90	\$0.00
WYNNEWOOD, WALKER	\$2,332.10	\$621.60
Totals	\$236,238.78	\$219,069.85

Atoka Association		
ATOKA, BENTLEY	\$3,829.55	\$4,706.49
ATOKA, BLACKJACK	\$2,334.40	\$2,093.70
ATOKA, FARRIS	\$1,671.23	\$2,792.97
ATOKA, FIRST	\$9,915.06	\$4,756.40
ATOKA, HARMONY	\$4,296.33	\$4,237.89
ATOKA, HILLCREST	\$0.00	\$0.00
ATOKA, NEW HOPE	\$0.00	\$0.00
ATOKA, SOUTHSIDE	\$3,619.11	\$3,411.02
ATOKA, TUSHKA	\$5,568.97	\$4,188.36
ATOKA, WARDS CHAPEL	\$750.00	\$0.00
CADDO, VOCA	\$8,486.00	\$7,518.00
CANEY, FIRST	\$4,335.71	\$4,465.80
CANEY, MT CARMEL	\$1,378.95	\$1,493.67
CENTRAHOMA	\$158.22	\$166.57
COALGATE, COTTONWOOD	\$139.66	\$105.59
COALGATE, FIRST	\$2,796.96	\$2,606.41
COALGATE, OLNEY	\$0.00	\$0.00
LANE, CRYSTAL	\$825.45	\$733.52
LANE, FIRST	\$2,193.72	\$3,428.72
LEHIGH, FIRST	\$1,194.30	\$1,164.99
STRINGTOWN, FIRST	\$6,472.89	\$6,945.07
STRINGTOWN, MCGEE VALLEY	\$3,899.07	\$5,552.62
TUPELO, FIRST	\$1,277.07	\$1,150.93
WAPANUCKA, WILSON	\$0.00	\$0.00
Totals	\$65,142.65	\$61,518.72

Banner Association		
ADA, AHLOSO	\$606.22	\$496.26
ADA, COLBERT	\$1,117.00	\$1,410.00
ADA, FAITH	\$256.00	\$587.64
ADA, FIRST	\$84,752.05	\$90,124.94
ADA, GALEY	\$1,032.00	\$1,376.00
ADA, HIGH HILL	\$0.00	\$0.00
ADA, HOMER	\$6,637.44	\$6,074.68
ADA, LOVELADY	\$8,620.19	\$6,979.18
ADA, MORRIS MEMORIAL	\$7,358.00	\$8,934.00
ADA, OAK AVENUE	\$5,981.32	\$6,442.87
ADA, SOVEREIGN GRACE BIBLE	\$0.00	\$0.00
ADA, TRINITY	\$27,416.95	\$34,897.43

Church	2024	2023
ADA, UNION HILL	\$939.80	\$2,208.16
ADA, UNION VALLEY	\$0.00	\$0.00
ALLEN, FIRST	\$3,910.19	\$2,805.59
FITTS TOWN, FIRST	\$7,925.06	\$7,440.37
FITZ HUGH, FIRST	\$38,346.50	\$37,404.07
FRANCIS, FIRST	\$0.00	\$0.00
ROFF, FIRST	\$410.75	\$2,996.79
ROFF, LIGHTNING RIDGE	\$937.75	\$969.47
STONEWALL, FIRST	\$14,128.04	\$10,940.29
Totals	\$210,375.26	\$222,087.74

Bryan Association		
ACHILLE, COMMUNITY	\$0.00	\$0.00
ACHILLE, FIRST	\$0.00	\$0.00
ALBANY	\$0.00	\$0.00
ALBANY, RED RIVER VALLEY COWBOY	\$48.00	\$80.00
ARMSTRONG, FIRST	\$3,625.38	\$7,818.64
BENNINGTON, FIRST	\$162.00	\$948.00
BENNINGTON, WADE	\$397.35	\$569.76
BOKCHITO, FAITH	\$875.49	\$758.18
BOKCHITO, FIRST	\$50.00	\$0.00
BOKCHITO, REYNOLDS CHAPEL	\$537.29	\$300.65
BOKCHITO, ROBINSON	\$915.61	\$640.53
BOKCHITO, YUBA FIRST	\$0.00	\$0.00
CADDO, BLUE RIVER	\$0.00	\$4,805.12
CADDO, FIRST	\$471.21	\$278.38
CALERA	\$2,796.22	\$5,195.05
CARTWRIGHT, FIRST	\$50.00	\$0.00
COLBERT, FIRST	\$4,225.08	\$5,088.13
DURANT, BLUE	\$2,369.45	\$2,721.71
DURANT, BROWN	\$340.30	\$1,221.40
DURANT, BUSHNELL	\$1,504.16	\$2,638.00
DURANT, CALVARY	\$14,122.57	\$17,605.98
DURANT, COBB	\$320.00	\$0.00
DURANT, FAIRVIEW	\$6,527.45	\$6,121.52
DURANT, FIRST	\$86,128.56	\$77,465.17
DURANT, GRACE	\$6,298.76	\$5,341.91
DURANT, LAKEPOINT	\$0.00	\$0.00
DURANT, ROBERTA	\$639.50	\$3,303.20
DURANT, SILO	\$8,089.71	\$6,938.31
DURANT, STONE CREEK	\$1,867.76	\$1,445.01
DURANT, SUNSET VIEW	\$0.00	\$0.00
DURANT, WESTERN MEADOWS	\$3,822.26	\$4,092.94
HENDRIX	\$126.94	\$63.87
KEMP	\$825.00	\$1,915.00
KENEFIC	\$1,345.26	\$1,430.22
MEAD	\$6,957.99	\$5,181.08
MEAD, EMMANUEL	\$3,046.12	\$3,053.48
MEAD, STREETMAN ROAD	\$300.00	\$0.00
PLATTER, FIRST	\$305.12	\$0.00
UTICA	\$852.50	\$912.67
Totals	\$159,943.04	\$167,933.91

Caddo Association		
ALBERT, ONEY	\$3,966.71	\$5,682.61
ANADARKO, BETHEL	\$10,458.53	\$12,494.40
ANADARKO, FIRST	\$60,106.17	\$52,866.50
ANADARKO, INDIAN CAPITAL	\$0.00	\$0.00
ANADARKO, SQUARE TOP	\$663.00	\$746.00
ANADARKO, VIRGINIA AVENUE	\$400.00	\$600.00
APACHE, FIRST	\$32,082.45	\$34,805.40
BINGER	\$0.00	\$2,122.00
CARNEGIE, ALFALFA	\$2,379.70	\$2,827.01
CARNEGIE, FAITH INDIAN	\$0.00	\$0.00
CARNEGIE, FIRST	\$20,326.75	\$21,006.14
CEMENT, FIRST	\$1,043.82	\$998.20
CYRIL, FIRST	\$7,479.17	\$8,163.63
CYRIL, MIDWAY	\$643.50	\$1,038.04
EAKLY, BETHEL SPANISH MISSION	\$234.30	\$561.50
EAKLY, FIRST	\$5,731.60	\$7,437.61
FORT COBB, FIRST	\$4,985.57	\$4,745.55
FORT COBB, FIRST CADDO	\$0.00	\$0.00

Church	2024	2023
GRACEMONT, FIRST	\$5,000.00	\$6,000.00
HINTON, FIRST	\$62,304.00	\$68,954.00
HINTON, SCOTT	\$1,819.41	\$1,217.80
HYDRO, FIRST	\$10,437.35	\$8,011.38
HYDRO, PLEASANT VALLEY	\$5,314.40	\$6,475.60
HYDRO, SWAN LAKE	\$650.19	\$345.34
MINCO, CANAAN	\$2,516.56	\$1,709.19
VERDEN, FIRST	\$11,665.90	\$10,933.21
Totals	\$250,209.08	\$259,741.11

Central Association		
CALUMET	\$0.00	\$0.00
CANTON, FIRST	\$2,800.79	\$2,474.25
CASHION, FIRST	\$10,000.00	\$4,000.00
COYLE, FIRST	\$1,259.60	\$1,354.80
CRESCENT, CENTRAL	\$3,181.31	\$4,713.59
CRESCENT, FIRST	\$0.00	\$8,435.46
CRESCENT, OAK VALLEY	\$1,537.83	\$1,499.63
DOVER, FIRST	\$1,462.52	\$1,697.75
EDMOND, MISSION BIBLE	\$2,118.44	\$6,424.90
EL RENO, FIRST	\$30,279.98	\$30,032.40
EL RENO, SOUTHERN HEIGHTS	\$0.00	\$0.00
EL RENO, TRINITY	\$5,562.14	\$6,661.11
GEARY, FIRST	\$0.00	\$0.00
GREENFIELD, FIRST	\$4,497.28	\$3,514.49
GUTHRIE, FAITH	\$1,049.53	\$930.35
GUTHRIE, FRIENDSHIP	\$0.00	\$0.00
GUTHRIE, GRACE COVENANT	\$0.00	\$0.00
GUTHRIE, NOBLE AVENUE	\$9,858.20	\$8,296.12
GUTHRIE, SEWARD ROAD	\$4,885.81	\$4,984.90
HENNESSEY, CRISTO REY	\$935.00	\$0.00
HENNESSEY, FIRST	\$19,818.08	\$42,493.90
KINGFISHER, FIRST	\$49,998.77	\$61,170.26
LONGDALE, FIRST	\$4,565.33	\$6,248.73
MULHALL, FIRST	\$3,601.32	\$5,120.25
OKARCHE, FIRST	\$7,383.01	\$6,590.01
OKEENE, FIRST	\$11,757.61	\$15,266.09
OMEGA	\$3,346.46	\$3,132.92
ORLANDO, FIRST	\$1,405.00	\$1,895.00
UNION CITY, FIRST	\$2,000.00	\$2,000.00
WATONGA, FIRST	\$14,920.77	\$13,925.82
WATONGA, TRINITY	\$2,518.82	\$4,364.90
YUKON CHURCH	\$14,591.41	\$18,151.91
Totals	\$215,335.01	\$265,379.54

Cherokee Association		
COLCORD, CLOUDS CREEK	\$967.01	\$1,802.14
COLCORD, NEW GREEN	\$0.00	\$0.00
EUCHA, HILLSIDE	\$131.00	\$105.00
EUCHA, ROUND SPRINGS	\$0.00	\$0.00
HULBERT, KEENER	\$0.00	\$0.00
HULBERT, SWIMMER	\$125.00	\$150.00
JAY, BRUSH CREEK	\$800.00	\$922.00
JAY, OLD CLOUDS CREEK	\$0.00	\$0.00
JAY, PINE RIDGE	\$0.00	\$0.00
JAY, PINEY	\$480.29	\$1,299.52
JAY, TYIO	\$312.05	\$355.00
KANSAS, LONG PRAIRIE	\$0.00	\$0.00
KANSAS, TWIN OAKS	\$1,095.36	\$749.23
LOCUST GROVE, BALLOU	\$0.00	\$0.00
LOCUST GROVE, COUNTRY	\$0.00	\$30.00
LOCUST GROVE, LITTLE ROCK	\$0.00	\$0.00
LOCUST GROVE, SNAKE CREEK	\$0.00	\$0.00
MULDROW, BELLEFONTE	\$0.00	\$0.00
PORUM, OAK GROVE	\$0.00	\$25.00
ROSE, ELM PRAIRIE	\$0.00	\$0.00
SALINA, EMMANUEL	\$179.83	\$391.98
SALINA, EUWASHA	\$872.64	\$1,289.61
SALINA, FIRST INDIAN	\$0.00	\$0.00
SALINA, NEW JORDAN	\$260.74	\$253.96
SALINA, STANDING ROCK	\$65.00	\$77.00
SALINA, STEELEY	\$457.72	\$784.51
SPAVINAW, RIBBON	\$516.51	\$4,719.52

Church	2024	2023
STILWELL, CHERRY TREE	\$600.00	\$600.00
STILWELL, CHUCULATE	\$250.00	\$300.00
STILWELL, ECHOTA	\$15.00	\$0.00
STILWELL, FAIRFIELD	\$1,528.85	\$1,406.03
STILWELL, FOUR VISIONS	\$0.00	\$0.00
STILWELL, MULBERRY TREE	\$0.00	\$0.00
STILWELL, OAKRIDGE	\$0.00	\$0.00
STILWELL, PINEY CREEK	\$0.00	\$0.00
STILWELL, SALEM	\$600.00	\$600.00
STILWELL, SEQUOYAH	\$0.00	\$0.00
TAHLEQUAH, CEDAR TREE	\$0.00	\$300.00
TAHLEQUAH, ELM TREE	\$875.00	\$750.00
TAHLEQUAH, FIRST INDIAN	\$100.10	\$561.02
TAHLEQUAH, JOHNSON PRAIRIE	\$0.00	\$0.00
TAHLEQUAH, NEW GREEN LEAF	\$1,113.21	\$562.19
WATTS, CRITTENDEN	\$50.41	\$58.19
Totals	\$11,395.72	\$18,091.90

Cherokee Strip Association

AMES, AMES BAPTIST CHURCH	\$1,250.00	\$2,250.00
BILLINGS, FIRST	\$3,333.21	\$1,675.91
BYRON, FIRST	\$600.00	\$600.00
CHEROKEE, FIRST	\$37,281.05	\$31,266.73
COVINGTON, FIRST	\$4,869.23	\$3,967.48
DRUMMOND, CROSS	\$12.00	\$0.00
ENID, BETHLEHEM	\$3,154.65	\$5,226.00
ENID, CHISHOLM TRAIL COWBOY	\$100.00	\$100.00
ENID, EMMANUEL	\$25,800.00	\$240.00
ENID, FIRST	\$44,640.51	\$39,194.37
ENID, FIRST INDIAN	\$0.00	\$0.00
ENID, GARLAND ROAD	\$3,344.00	\$2,307.00
ENID, GRACEWAY	\$600.00	\$700.00
ENID, IGLESIA BAUTISTA AGUA VIVA	\$0.00	\$0.00
ENID, IGLESIA BAUTISTA EMANUEL	\$0.00	\$0.00
ENID, INTERNATIONAL GRACE	\$0.00	\$0.00
ENID, LIBERTY SOUTHERN	\$1,892.96	\$1,721.92
ENID, OPEN DOOR	\$14,559.82	\$17,868.54
ENID, TRINITY	\$0.00	\$0.00
ENID, YOUR FAMILY	\$0.00	\$0.00
FAIRVIEW, FIRST	\$6,368.66	\$6,408.26
GARBER, FIRST	\$2,456.25	\$2,795.73
MARSHALL, FIRST	\$0.00	\$169.65
MEDFORD, FIRST	\$1,149.90	\$2,073.83
PERRY, FIRST	\$24,408.94	\$17,519.41
PERRY, KAW STREET CHAPEL	\$956.90	\$892.66
PERRY, SUMNER	\$589.05	\$519.29
POND CREEK, FIRST	\$0.00	\$688.55
RINGWOOD, FIRST	\$6,257.64	\$2,918.34
RINGWOOD, SEGUIDORES DE JESUCRISTO	\$0.00	\$0.00
Totals	\$183,624.77	\$141,103.67

Cheyenne-Arapaho Association

CLINTON, INDIAN	\$0.00	\$0.00
EL RENO, INDIAN	\$477.00	\$452.00
ELK CITY, INDIAN	\$0.00	\$0.00
GEARY, CHIEF CORNERSTONE	\$0.00	\$0.00
KINGFISHER, ALL NATIONS	\$0.00	\$0.00
WATONGA, MISSION POINT	\$0.00	\$0.00
WEATHERFORD, INDIAN	\$0.00	\$0.00
Totals	\$477.00	\$452.00

Chi-Ka-Sha Association

ADA, FIRST INDIAN	\$0.00	\$345.00
ARDMORE, INDIAN	\$1,470.68	\$1,176.19
CONNERVILLE, OKCHAMALI	\$4,678.00	\$3,754.00
FITTS TOWN, HICKORY HILL	\$462.51	\$445.22
MADILL, ARCHARD ROAD	\$448.38	\$0.00
MADILL, PICKENS	\$0.00	\$0.00
MARLOW, ST YORK	\$0.00	\$0.00
OVERBROOK, MCALISTER	\$0.00	\$0.00
ROFF, OAK GROVE	\$0.00	\$0.00

Church	2024	2023
STRATFORD, SANDY HILL	\$0.00	\$0.00
STRINGTOWN, COMMUNITY	\$0.00	\$0.00
SULPHUR, NEW HOPE	\$20.00	\$30.00
SULPHUR, SANDY	\$0.00	\$0.00
TISHOMINGO, FIRST INDIAN	\$0.00	\$137.10
Totals	\$7,079.57	\$5,887.51

Choctaw-Chickasaw Association

ANTLERS, FAITH	\$0.00	\$0.00
ARDMORE, CONCORD	\$0.00	\$0.00
ARDMORE, DURWOOD	\$0.00	\$0.00
BROKEN BOW, MYRTLEWOOD	\$0.00	\$0.00
CALERA, GRACE INDIAN	\$0.00	\$900.00
KEOTA, NEW HOPE	\$0.00	\$0.00
MCALISTER, DOUBLE SPRINGS	\$0.00	\$0.00
MCALISTER, FIRST INDIAN	\$1,257.58	\$1,312.44
PITTSBURG, SARDIS	\$2,533.00	\$2,141.00
RED OAK, CEDAR	\$0.00	\$0.00
RED OAK, SOUTH ROCK CREEK	\$116.66	\$155.95
TALIHINA, GREEN HILL	\$0.00	\$0.00
WILBURTON, BOILING SPRING	\$0.00	\$0.00
Totals	\$3,907.24	\$4,509.39

Cimarron Association

BLACKBURN, FIRST	\$612.03	\$822.75
BRISTOW, FIRST	\$10,566.00	\$12,839.00
BRISTOW, TRINITY	\$0.00	\$0.00
CLEVELAND, FIRST	\$21,569.39	\$23,332.31
CLEVELAND, WESTERN HEIGHTS	\$450.00	\$687.50
CLEVELAND, WESTPORT	\$9,060.18	\$7,391.86
CUSHING, CALVARY	\$662.00	\$676.00
CUSHING, FIRST	\$25,143.60	\$22,859.60
CUSHING, FIRST INDIAN	\$0.00	\$0.00
CUSHING, NEW PATHWAYS	\$922.28	\$993.14
CUSHING, OAK GROVE	\$5,500.00	\$10,000.00
CUSHING, ONLY WAY	\$3,110.82	\$4,423.67
CUSHING, PARK PLACE	\$225.00	\$150.00
DEPEW, FIRST	\$1,238.00	\$9,274.00
DRUMRIGHT, FIRST	\$1,705.90	\$2,112.04
GLENCOE, FIRST	\$9,296.50	\$9,140.85
HALLETT, FIRST	\$221.45	\$550.56
JENNINGS, FIRST	\$2,918.75	\$2,669.56
KELLYVILLE, FIRST	\$12,758.86	\$11,077.24
KELLYVILLE, SUNRISE	\$1,272.00	\$1,220.00
MANNFORD, FREEDOM HILL	\$91.69	\$665.31
MANNFORD, LAKESIDE SOUTHERN	\$2,952.00	\$3,224.66
MILFAY, FIRST	\$3,475.00	\$3,841.00
MORRISON, HILLTOP COUNTRY	\$1,403.95	\$1,221.75
MOUNDS, FIRST	\$6,226.52	\$4,396.63
OILTON, FIRST	\$2,355.47	\$2,168.09
OLIVE, FIRST	\$7,309.96	\$6,595.35
OSAGE, FIRST	\$0.00	\$0.00
PAWNEE, FIRST	\$9,015.32	\$8,470.54
PAWNEE, INDIAN	\$0.00	\$0.00
PAWNEE, MASHAM	\$0.00	\$0.00
PERKINS, FIRST	\$34,506.07	\$28,624.73
PERKINS, IMMANUEL	\$11,173.03	\$9,914.63
PERKINS, ROCKIN' M COWBOY	\$1,632.37	\$1,274.28
RALSTON, FIRST	\$4,447.26	\$1,527.18
SAND SPRINGS, RIMROCK	\$225.00	\$0.00
SAPULPA, FOREST HILLS	\$2,605.90	\$959.94
SAPULPA, PICKETT PRAIRIE FIRST	\$7,675.06	\$7,737.00
SHAMROCK, FIRST	\$1,739.16	\$1,136.32
STILLWATER, CHINESE	\$2,500.00	\$0.00
STILLWATER, COUNTRYSIDE	\$0.00	\$0.00
STILLWATER, CROSS BRAND COWBOY	\$0.00	\$0.00
STILLWATER, EAGLE HEIGHTS	\$35,703.73	\$34,612.07
STILLWATER, FIRST	\$4,432.89	\$2,694.10
STILLWATER, HILLCREST	\$3,500.00	\$3,000.00
STILLWATER, HISPANA BETHEL	\$807.55	\$714.23
STILLWATER, KOREAN	\$0.00	\$0.00

Church	2024	2023
STILLWATER, SOUTHSIDE	\$6,549.00	\$6,125.00
STILLWATER, UNIVERSITY HEIGHTS	\$7,373.48	\$8,524.42
TERLTON, FIRST	\$1,772.55	\$8,082.87
YALE, COUNCIL VALLEY	\$1,563.17	\$1,209.70
YALE, FELLOWSHIP	\$5,972.46	\$6,342.78
YALE, FIRST	\$2,592.63	\$3,138.59
Totals	\$276,833.98	\$276,421.25

Comanche-Cotton Association

APACHE, COWBOY	\$0.00	\$0.00
CACHE, FIRST	\$9,233.98	\$8,887.86
CACHE, WICHITA	\$0.00	\$0.00
CHATTANOOGA, ANTIOCH	\$0.00	\$0.00
CHATTANOOGA, FIRST	\$3,849.79	\$3,480.52
DEVOL, FIRST	\$3,681.82	\$0.00
ELGIN, CROSSROADS	\$9,005.00	\$12,824.00
ELGIN, GRACE COMMUNITY	\$644.35	\$930.04
ELGIN, LOCUST GROVE	\$1,657.27	\$1,468.05
FAXON, FIRST	\$0.00	\$0.00
FLETCHER, FIRST	\$40,025.71	\$40,270.65
FREDERICK, TESCA	\$100.00	\$0.00
GERONIMO, FIRST	\$1,262.78	\$1,314.58
GRANDFIELD, CALVARY	\$268.65	\$325.09
GRANDFIELD, FIRST	\$5,619.54	\$5,556.68
INDIAHOMA	\$1,800.00	\$1,800.00
LAWTON, ALL NATIONS	\$0.00	\$0.00
LAWTON, CACHE CREEK COWBOY	\$0.00	\$0.00
LAWTON, CALVARY	\$4,317.55	\$3,535.71
LAWTON, CAMERON	\$25,411.70	\$25,412.71
LAWTON, CENTRAL	\$15,072.20	\$15,284.38
LAWTON, CHRIST FELLOWSHIP	\$0.00	\$0.00
LAWTON, FIRST	\$64,638.02	\$49,554.84
LAWTON, FIRST EAST	\$67,477.19	\$66,326.52
LAWTON, FIRST WEST	\$33,220.50	\$35,730.21
LAWTON, FRIENDSHIP	\$900.00	\$450.00
LAWTON, GOD'S FAMILY	\$500.00	\$100.00
LAWTON, IMMANUEL	\$854.65	\$767.19
LAWTON, KOREAN FIRST	\$0.00	\$0.00
LAWTON, LETITIA	\$16,675.44	\$13,505.34
LAWTON, MEMORIAL INDIAN	\$356.00	\$912.00
LAWTON, MOUNT CALVARY	\$0.00	\$0.00
LAWTON, NORTHSIDE	\$100.00	\$0.00
LAWTON, OLIVET	\$1,280.18	\$1,259.52
LAWTON, PARADISE VALLEY	\$11,217.88	\$8,277.78
LAWTON, POLLARD AVENUE	\$0.00	\$0.00
LAWTON, ST. JAMES	\$0.00	\$0.00
LAWTON, TRINITY	\$3,562.41	\$3,739.86
MARLOW, DENTON	\$2,528.00	\$2,454.00
MEDICINE PARK, FIRST	\$1,790.51	\$3,928.45
RANDLETT	\$2,846.63	\$2,280.23
RANDLETT, UNION VALLEY	\$6,925.79	\$6,777.70
SNYDER, SOUTHSIDE	\$1,181.28	\$923.53
STERLING, FIRST	\$5,479.37	\$6,760.57
TEMPLE, FIRST	\$5,784.50	\$5,202.03
WALTERS, AHPEATONE	\$0.00	\$0.00
WALTERS, CALVARY	\$2,000.33	\$2,238.50
WALTERS, FIRST	\$35,840.60	\$33,464.73
WALTERS, NEW SALEM	\$0.00	\$0.00
Totals	\$387,109.62	\$365,743.27

Craig-Mayes Association

ADAIR, FIRST	\$21,810.47	\$14,505.16
ADAIR, PLEASANT HOPE	\$2,437.40	\$2,705.60
AFTON, CLEORA	\$1,599.25	\$1,462.49
BIG CABIN	\$2,781.85	\$1,725.33
BIG CABIN, UTOPIA	\$0.00	\$1,264.61
BLUEJACKET, CORNERSTONE FAITH	\$597.05	\$600.40
BLUEJACKET, FIRST	\$5,996.80	\$5,843.47
BLUEJACKET, TIMBERHILL	\$733.50	\$973.21
CHOUTEAU, FIRST	\$2,700.00	\$900.00
INOLA, COWBOY GATHERIN'	\$1,200.00	\$1,200.00
KETCHUM, FIRST SOUTHERN	\$352.83	\$386.37

Church	2024	2023
LANGLEY, FIRST	\$8,514.00	\$7,910.00
LOCUST GROVE, CEDAR CREST	\$844.38	\$764.96
LOCUST GROVE, FAITH	\$443.35	\$541.16
LOCUST GROVE, FIRST	\$12,720.74	\$9,426.64
LOCUST GROVE, LIFE FELLOWSHIP	\$0.00	\$0.00
MAZIE, FIRST	\$393.33	\$530.99
PRYOR, COO-Y-YAH	\$0.00	\$0.00
PRYOR, EXCITING SOUTHEAST	\$4,586.00	\$4,713.00
PRYOR, FIRST	\$6,010.66	\$5,227.07
PRYOR, HERITAGE SOUTHERN	\$407.93	\$471.15
PRYOR, LIFE FELLOWSHIP	\$10,261.61	\$7,765.89
PRYOR, PLEASANT VIEW	\$546.50	\$836.65
SALINA, FIRST	\$2,572.00	\$2,736.00
SALINA, LAKEVIEW	\$3,031.36	\$1,762.24
SPAVINAW, FIRST	\$2,267.61	\$1,102.76
STRANG, FIRST	\$1,408.00	\$1,193.00
VINITA, BUNKER HILL	\$4,216.76	\$5,597.81
VINITA, CALVARY	\$1,940.00	\$2,182.00
VINITA, CARTER	\$298.12	\$295.20
VINITA, DUPREE COMMUNITY	\$145.29	\$231.29
VINITA, FIRST	\$11,620.90	\$9,763.16
VINITA, KELSO FAITH	\$393.81	\$440.94
VINITA, TRINITY	\$525.46	\$575.48
VINITA, WHITE OAK	\$568.71	\$525.03
WELCH	\$4,270.48	\$3,425.67
WELCH, MAYBELLE	\$637.93	\$112.28
Totals	\$118,834.08	\$99,697.01

East Central Association

BLACKGUM, FIRST	\$1,800.00	\$2,700.00
COLCORD, SOLID ROCK	\$300.00	\$300.00
COOKSON	\$3,861.80	\$3,459.67
GANS, GRACE NEW BEGINNINGS	\$0.00	\$0.00
GORE, CROSSING	\$125.00	\$0.00
GORE, FIRST SOUTHERN	\$4,598.05	\$3,118.00
MARBLE CITY, FIRST	\$1,877.64	\$1,724.67
MULDROW, FELLOWSHIP	\$4,464.00	\$1,847.00
MULDROW, FIRST	\$2,065.00	\$3,670.00
MULDROW, MONTE CALVARIO	\$0.00	\$0.00
MULDROW, SHORT	\$2,052.00	\$2,403.00
MULDROW, VICTORY	\$0.00	\$0.00
PARK HILL, CARTER	\$3,736.08	\$4,228.28
PARK HILL, KEYS	\$600.00	\$600.00
PEGGS, FIRST SOUTHERN	\$0.00	\$0.00
PROCTOR, FIRST	\$0.00	\$0.00
ROLAND, ROLAND HILLS	\$2,462.63	\$2,548.41
ROLAND, SWON ROAD	\$306.00	\$0.00
SALLISAW, BADGER LEE	\$674.00	\$524.00
SALLISAW, BLUNT	\$2,593.89	\$2,852.40
SALLISAW, EASTSIDE	\$0.00	\$0.00
SALLISAW, FIRST	\$19,716.44	\$16,803.04
SALLISAW, FIRST AKINS	\$0.00	\$0.00
SALLISAW, HANSON FIRST	\$2,886.00	\$2,934.00
SALLISAW, IMMANUEL	\$0.00	\$500.00
SALLISAW, PRICES CHAPEL	\$408.27	\$750.00
STILWELL, BIDDING CREEK	\$4,457.20	\$4,823.88
STILWELL, BUNCH	\$1,198.00	\$1,123.00
STILWELL, CALVARY SOUTHERN	\$0.00	\$0.00
STILWELL, FIRST	\$2,500.00	\$2,500.00
STILWELL, ROCK SPRINGS	\$4,262.00	\$5,352.00
STILWELL, VICTORY SOUTHERN	\$1,463.08	\$2,135.93
TAHLEQUAH, ANTIOCH	\$0.00	\$0.00
TAHLEQUAH, BOUDINOT	\$0.00	\$0.00
TAHLEQUAH, CROSSWAY	\$1,642.41	\$1,522.70
TAHLEQUAH, ELDON	\$245.80	\$262.84
TAHLEQUAH, FIRST	\$48,753.37	\$51,952.31
TAHLEQUAH, GRACE	\$2,158.59	\$1,930.27
TAHLEQUAH, PARK HILL	\$16,597.63	\$18,488.30
TAHLEQUAH, RIVER VALLEY	\$587.17	\$625.89
TAHLEQUAH, SOUTHSIDE	\$2,965.52	\$4,030.71
VIAN	\$99.85	\$0.00

Church	2024	2023
WATTS, FIRST	\$0.00	\$3,303.07
WELLING, BARBER	\$250.00	\$500.00
WESTVILLE, BARON	\$2,515.40	\$1,700.23
WESTVILLE, CHRISTIE SOUTHERN	\$2,182.84	\$0.00
WESTVILLE, FIRST	\$2,500.00	\$4,544.50
Totals	\$148,905.66	\$155,758.10

Enon Association

ARDMORE, BROCK	\$240.00	\$360.00
ARDMORE, EMMANUEL	\$41,416.06	\$45,519.40
ARDMORE, FIRST	\$270,032.12	\$252,429.41
ARDMORE, MARY NIBLACK	\$5,812.00	\$7,648.00
ARDMORE, PRIMERA IGLESIA DE BAUTISTA HISPANA	\$1,076.00	\$1,122.00
ARDMORE, RAWHIDE CHURCH	\$3,220.00	\$3,215.00
ARDMORE, SOUTHWEST	\$1,947.31	\$1,278.67
ARDMORE, TRINITY	\$13,541.80	\$16,708.62
BURNEYVILLE	\$1,791.35	\$1,468.57
BURNEYVILLE, JIMTOWN	\$3,186.02	\$2,478.14
DICKSON, FAITH SOUTHERN	\$12,154.70	\$8,496.35
DICKSON, FIRST	\$5,827.44	\$5,286.24
FOX	\$1,200.00	\$1,200.00
GENE AUTRY, FIRST	\$0.00	\$0.00
HEALDTON, BETHEL	\$0.00	\$0.00
HEALDTON, FIRST	\$11,863.70	\$6,764.14
LEON	\$0.00	\$0.00
LOCO, FIRST	\$3,840.25	\$3,384.28
LONE GROVE, CHEEK	\$5,540.23	\$5,224.06
LONE GROVE, FIRST	\$19,965.66	\$23,423.92
MARIETTA, EASTSIDE	\$6,538.17	\$5,179.95
MARIETTA, FIRST	\$23,522.55	\$20,338.65
MARIETTA, PRIMERA HISPANIA	\$0.00	\$0.00
MARIETTA, SHADY DALE	\$0.00	\$0.00
OVERBROOK, EASTMAN	\$4,696.25	\$4,023.72
OVERBROOK, MARSDEN	\$2,543.24	\$2,020.68
RATLIFF CITY, FIRST	\$4,090.20	\$3,937.93
RATLIFF CITY, MILO	\$0.00	\$0.00
RINGLING, FIRST	\$2,653.95	\$2,473.38
SPRINGER, FIRST SOUTHERN	\$7,263.07	\$5,237.80
THACKERVILLE, FIRST	\$5,110.00	\$4,620.00
WILSON, FIRST	\$5,956.40	\$7,404.75
WILSON, REXROAT	\$3,151.23	\$1,399.88
WILSON, RUBOTTOM	\$1,819.40	\$2,227.91
WILSON, ZANEIS	\$2,227.69	\$2,424.91
Totals	\$472,226.79	\$447,296.36

Frisco Association

ANTLERS, DARWIN	\$2,786.71	\$2,199.20
ANTLERS, FIRST	\$16,257.00	\$19,532.00
ANTLERS, LITTLE CEDAR	\$2,292.00	\$2,326.05
ANTLERS, WESTSIDE	\$278.00	\$350.00
BOSWELL, FIRST	\$3,507.74	\$3,520.71
BROKEN BOW, CHAPEL OF THE PINES	\$908.15	\$974.51
BROKEN BOW, FIRST	\$49,076.47	\$47,056.91
CLAYTON, FIRST	\$3,884.27	\$3,655.73
CLEBIT, FIRST	\$1,182.32	\$767.12
FINLEY	\$7,581.08	\$6,096.71
FINLEY, ONE CREEK VALLEY	\$1,690.00	\$1,342.00
FORT TOWSON, CORINTH	\$197.00	\$256.00
FORT TOWSON, FAITHWAY	\$0.00	\$0.00
FORT TOWSON, FIRST	\$2,479.00	\$2,380.00
FORT TOWSON, SOBOL	\$1,500.00	\$1,900.00
GARVIN, FIRST	\$0.00	\$0.00
GOLDEN	\$3,440.77	\$3,034.53
GRANT, FIRST	\$585.68	\$741.68
HONOBIA, FIRST	\$627.00	\$589.28
HUGO, CLAYTON AVENUE	\$2,862.24	\$2,737.26
HUGO, COWBOY CROSSING	\$0.00	\$0.00
HUGO, EMMANUEL	\$0.00	\$0.00
HUGO, FIRST	\$26,648.37	\$27,106.60
HUGO, OAK GROVE	\$10,445.72	\$9,418.91
HUGO, SHOALS	\$4,912.20	\$5,677.03
HUGO, SOUTHSIDE	\$1,023.13	\$547.42

Church	2024	2023
HUGO, TRINITY	\$1,582.00	\$2,488.08
HUGO, UNITY	\$2,486.55	\$2,596.39
HUGO, VICTORY	\$854.74	\$707.80
IDABEL, CENTRAL	\$508.21	\$322.87
IDABEL, COMMUNITY FAITH	\$0.00	\$0.00
IDABEL, FIRST	\$32,115.81	\$28,025.15
IDABEL, FOREST HILL	\$0.00	\$0.00
IDABEL, IMMANUEL	\$0.00	\$0.00
IDABEL, TRINITY	\$14,120.37	\$13,664.97
MOYERS	\$3,480.00	\$3,620.68
MOYERS, MILLER	\$1,193.73	\$1,528.63
NASHOBA VALLEY	\$0.00	\$0.00
RATTAN, CLOUDY	\$1,343.88	\$1,070.60
RATTAN, FIRST	\$3,510.00	\$3,798.92
RUFÉ	\$430.62	\$350.46
SAWYER, FIRST	\$3,441.35	\$3,464.73
SOPER, ARCHEY	\$752.23	\$535.83
SOPER, FIRST	\$3,061.00	\$2,886.31
SOPER, KENT	\$2,648.77	\$3,318.81
TOM, FIRST	\$0.00	\$0.00
VALLIANT, FIRST	\$21,636.79	\$17,148.74
VALLIANT, PILGRIM REST	\$145.33	\$109.93
VALLIANT, TRINITY	\$4,699.93	\$4,846.18
WRIGHT CITY, FIRST	\$3,467.89	\$4,517.65
WRIGHT CITY, GLORY	\$0.00	\$0.00
Totals	\$245,644.05	\$237,212.38

Grady Association

ALEX SOUTHERN	\$8,224.90	\$8,144.85
AMBER, FIRST	\$4,256.48	\$5,439.83
BLANCHARD, MIDDLEBERG	\$2,857.00	\$3,755.00
BLANCHARD, MIDWAY SOUTHERN	\$4,425.67	\$2,214.93
BLANCHARD, OPEN DOOR	\$477.34	\$1,473.55
BLANCHARD, RIDGECREST	\$2,186.80	\$1,562.50
BRADLEY, FIRST	\$1,303.55	\$1,220.80
CEMENT, LAVERTY	\$3,772.00	\$2,703.00
CHICKASHA, COLLEGE HEIGHTS	\$34,631.88	\$36,701.18
CHICKASHA, FELLOWSHIP OF AMERICAN INDIANS	\$0.00	\$200.00
CHICKASHA, FIRST	\$102,096.79	\$93,507.99
CHICKASHA, MICHIGAN AVENUE	\$0.00	\$984.88
CHICKASHA, SHARON	\$3,679.64	\$4,738.80
CHICKASHA, SON RISE	\$6,293.23	\$4,464.61
CHICKASHA, SOUTHERN HILLS	\$600.00	\$500.00
CHICKASHA, TRINITY	\$4,912.99	\$4,130.58
EL RENO, NEW HOPE	\$7,624.00	\$9,175.00
MINCO, FIRST	\$17,115.68	\$22,196.06
MINCO, HAZEL DELL	\$3,005.13	\$2,476.58
NINNEKAH, FIRST	\$32,542.07	\$66,238.68
POCASSET, FIRST MISSIONARY	\$39,208.47	\$52,742.21
RUSH SPRINGS, COX CITY	\$2,610.00	\$1,768.00
RUSH SPRINGS, SOUTHERN	\$2,698.23	\$2,625.33
RUSH SPRINGS, VIMY RIDGE	\$26,758.08	\$22,344.34
TUTTLE, FIRST	\$30,637.53	\$34,788.02
TUTTLE, HERITAGE FAMILY	\$8,048.00	\$8,099.00
TUTTLE, TRUE OAK FELLOWSHIP	\$12.00	\$12.00
YUKON, STABLE ROCK	\$4,197.93	\$4,070.79
Totals	\$354,175.39	\$398,278.51

Great Plains Association

ALTUS, EMMANUEL	\$3,499.98	\$2,500.00
ALTUS, FIRST	\$131,840.69	\$103,042.91
ALTUS, FRIENDSHIP	\$8,340.84	\$10,034.75
ALTUS, MARTHA ROAD	\$25,794.19	\$33,520.65
ALTUS, PRIMERA IGLESIA BAUTISTA	\$100.00	\$0.00
ALTUS, REFORMED	\$0.00	\$0.00
ALTUS, SOUTHSIDE	\$2,653.84	\$2,583.75
ALTUS, TRINITY	\$1,298.72	\$1,790.32
BLAIR, FIRST	\$6,575.48	\$4,375.54
CARTER, FIRST	\$1,959.00	\$3,062.00
CARTER, RETROP	\$240.00	\$240.00

Church	2024	2023
CHEYENNE, FIRST	\$45,320.87	\$18,987.95
CRAWFORD, MAGNOLIA	\$2,950.00	\$2,197.00
DUKE, FIRST	\$2,207.51	\$1,944.12
DUKE, PRAIRIE HILL	\$0.00	\$0.00
DURHAM	\$3,020.80	\$2,723.55
ELDORADO, CORINTH	\$7,453.06	\$5,660.40
ELDORADO, FIRST	\$0.00	\$0.00
ELK CITY, EASTSIDE	\$2,715.00	\$2,305.76
ELK CITY, FAIRVIEW	\$3,197.98	\$2,213.93
ELK CITY, FIRST	\$92,438.81	\$80,192.00
ELK CITY, FIRST HISPANIC	\$1,552.47	\$1,941.60
ELK CITY, MAIN STREET	\$13,884.60	\$11,888.58
ELK CITY, ONE	\$0.00	\$0.00
ELK CITY, PRAIRIE VIEW	\$3,123.65	\$3,129.68
ELMER, HESS	\$1,058.32	\$1,148.94
ERICK, FIRST	\$4,934.20	\$5,258.39
FREDERICK, FIRST	\$21,791.17	\$19,390.91
GRANITE, FIRST	\$2,948.26	\$3,082.66
GRANITE, LAKE CREEK	\$2,348.81	\$2,261.70
HAMMON, FIRST	\$7,144.38	\$4,634.71
HEADRICK, FIRST	\$898.12	\$826.82
HOLLIS, FAITH	\$0.00	\$0.00
HOLLIS, FIRST	\$24,520.83	\$22,150.11
LEEDY, FIRST	\$6,818.45	\$7,746.53
LEEDY, MOOREWOOD MISSIONARY	\$0.00	\$0.00
MANGUM, ABUNDANT LIFE	\$1,902.19	\$1,869.70
MANGUM, FIRST	\$5,138.06	\$5,472.57
MANGUM, RUSSELL	\$1,697.00	\$2,820.84
MANGUM, TRINITY	\$1,109.00	\$1,070.00
OLUSTEE, FIRST	\$0.00	\$0.00
REYDON, FIRST	\$1,231.61	\$530.64
RHEA, FIRST	\$0.00	\$0.00
ROOSEVELT, FIRST	\$3,006.90	\$2,540.70
SAYRE, BUFFALO	\$552.00	\$620.00
SAYRE, FIRST	\$23,897.93	\$21,418.54
SAYRE, HEXT	\$0.00	\$0.00
SAYRE, LONE OAK	\$0.00	\$0.00
SNYDER, FIRST	\$13,923.02	\$13,370.67
STRONG CITY, FIRST	\$0.00	\$688.00
SWEETWATER, FIRST	\$4,109.39	\$3,676.36
TEXOLA, FIRST	\$2,917.08	\$2,163.92
TIPTON, FIRST	\$6,068.74	\$5,103.39
VINSON	\$0.00	\$0.00
WILLOW, FIRST	\$2,194.70	\$3,005.92
WILLOW, SPRING CREEK	\$1,115.92	\$1,251.04
Totals	\$501,493.57	\$426,437.55

Johnston-Marshall Association

BROMIDE	\$4,934.60	\$2,505.90
COLEMAN BAPTIST	\$2,161.80	\$2,036.04
CONNerville, FIRST	\$1,032.00	\$1,130.00
KENEFIC, BUTCHER PEN	\$290.72	\$293.58
KINGSTON, BAY POINT	\$2,273.37	\$2,847.72
KINGSTON, CROSS ROADS	\$2,383.85	\$108.60
KINGSTON, ENOS	\$673.54	\$493.92
KINGSTON, FIRST	\$16,009.76	\$16,371.27
KINGSTON, HILLTOP	\$1,894.00	\$1,107.00
KINGSTON, NEW HOPE SOUTHERN	\$0.00	\$0.00
KINGSTON, TEXOMA SOUTHERN	\$5,240.98	\$4,600.72
KINGSTON, WILLIS	\$4,728.53	\$3,074.51
LEBANON, FIRST	\$0.00	\$0.00
MADILL, CUMBERLAND	\$2,336.44	\$1,846.04
MADILL, FIRST	\$62,382.86	\$55,927.28
MADILL, GRANTHAM	\$6,546.00	\$4,570.00
MADILL, LITTLE CITY	\$4,142.62	\$4,547.55
MADILL, NUEVA VIDA	\$730.00	\$391.00
MADILL, OAKVIEW	\$8,986.99	\$7,491.57
MANNSVILLE, FIRST	\$7,877.43	\$7,445.95
MILBURN, FIRST	\$2,606.10	\$2,627.10
MILBURN, NIDA	\$0.00	\$0.00
MILL CREEK, FIRST	\$0.00	\$0.00

Church	2024	2023
RAVIA	\$1,030.74	\$4,408.97
TISHOMINGO, BULLARD CHAPEL	\$2,456.00	\$2,050.00
TISHOMINGO, CALVARY	\$0.00	\$3,094.48
TISHOMINGO, FIRST	\$3,687.39	\$5,173.77
WAPANUCKA, FIRST	\$2,880.00	\$0.00
Totals	\$147,285.72	\$134,142.97

Kay Association

BLACKWELL, FIRST	\$1,161.20	\$2,292.08
BLACKWELL, IGLESIA BAUTISTA EMANUEL	\$0.00	\$0.00
BLACKWELL, IMMANUEL	\$9,999.98	\$10,000.02
BURBANK, FIRST	\$2,014.00	\$2,012.66
FAIRFAX, FIRST OSAGE	\$2,691.68	\$2,563.19
KAW CITY, OAK GROVE	\$1,672.90	\$1,307.40
KILDARE	\$0.00	\$0.00
LAMONT, FIRST	\$567.00	\$564.00
MARLAND, FIRST	\$0.00	\$0.00
NEWKIRK, FIRST	\$0.00	\$0.00
PONCA CITY, CRESTVIEW	\$875.00	\$660.00
PONCA CITY, FIRST	\$45,947.96	\$45,659.54
PONCA CITY, HISPANA	\$100.00	\$150.00
PONCA CITY, NEW FAITH	\$0.00	\$0.00
PONCA CITY, NEWPOINT	\$0.00	\$0.00
PONCA CITY, NORTHEAST	\$29,939.30	\$31,951.65
PONCA CITY, OSAGE HEIGHTS	\$946.73	\$1,485.00
PONCA CITY, PONCA INDIAN	\$0.00	\$0.00
PONCA CITY, PROVIDENCE	\$240.00	\$200.00
PONCA CITY, RANCH DRIVE	\$320.81	\$229.85
PONCA CITY, SUNSET	\$2,610.00	\$3,674.76
RED ROCK, FIRST	\$673.00	\$501.00
RED ROCK, OTOE	\$0.00	\$0.00
SHIDLER, FIRST	\$0.00	\$451.07
TONKAWA, FAITH	\$0.00	\$0.00
TONKAWA, FIRST	\$1,200.00	\$1,200.00
Totals	\$100,959.56	\$104,902.22

Leflore Association

ALBION, FIRST	\$1,148.00	\$1,462.89
ARKOMA, FIRST	\$2,812.81	\$3,807.61
BOKOSHE, FIRST	\$916.06	\$1,113.96
CAMERON, FIRST	\$0.00	\$0.00
CAMERON, LIBERTY HILL	\$1,763.55	\$1,369.00
HEAVENER, BIG CREEK	\$13,020.02	\$11,469.47
HEAVENER, BIG CREEK HISPANIC	\$0.00	\$0.00
HEAVENER, FIRST	\$6,190.00	\$6,751.00
HEAVENER, FORRESTER	\$1,307.08	\$1,364.90
HEAVENER, HONTUBBY	\$645.00	\$686.00
HEAVENER, INDEPENDENCE	\$400.00	\$1,200.00
HEAVENER, LOVING	\$3,200.00	\$359.25
HEAVENER, NUEVA VIDA EN CRISTO	\$0.00	\$0.00
HEAVENER, PAGE	\$0.00	\$0.00
HEAVENER, PERRY CHAPEL	\$0.00	\$0.00
HEAVENER, PILGRIMS REST	\$167.61	\$167.03
HEAVENER, TRINITY	\$1,750.00	\$1,500.00
HODGEN, FIRST	\$1,316.10	\$1,403.40
HODGEN, STAPP-ZOE	\$1,422.70	\$2,025.25
HOWE, FIRST	\$450.00	\$675.00
HOWE, MOUNTAIN VIEW	\$0.00	\$0.00
HOWE, SPRINGHILL	\$7,059.06	\$6,852.60
HOWE, THE HIGHWAY	\$0.00	\$0.00
HOWE, VICTORY	\$0.00	\$0.00
KEOTA, COWLINGTON	\$0.00	\$0.00
LEFLORE, FIRST	\$569.50	\$436.15
MONROE, FIRST	\$4,536.00	\$4,560.00
MUSE, FIRST	\$489.00	\$480.50
PANAMA, FIRST	\$960.38	\$596.30
POCOLA, FIRST	\$4,849.34	\$1,851.51
POCOLA, TRINITY	\$1,835.23	\$1,803.03
POTEAU, CROSS COMMUNITY	\$2,000.22	\$2,000.22
POTEAU, DOUBLE BRANCH	\$6,318.91	\$5,109.76
POTEAU, FIRST	\$7,232.31	\$5,899.47

Church	2024	2023
POTEAU, HISPANIC	\$0.00	\$0.00
POTEAU, SOUTHSIDE	\$32,427.68	\$33,668.24
POTEAU, TRINITY	\$1,565.00	\$1,905.00
ROCK ISLAND, FRIENDSHIP	\$1,579.48	\$2,021.08
SHADY POINT, CALHOUN	\$3,760.26	\$3,686.88
SHADY POINT, FIRST	\$1,998.00	\$1,637.00
SMITHVILLE, OCTAVIA	\$7,812.74	\$8,287.45
SPIRO, CALVARY SOUTHERN	\$0.00	\$0.00
SPIRO, FIRST	\$0.00	\$0.00
TALIHINA, BUFFALO VALLEY	\$1,459.51	\$1,587.90
TALIHINA, FALFA	\$994.12	\$995.51
TALIHINA, FIRST	\$5,191.56	\$4,861.97
TALIHINA, GOD'S COUNTRY COWBOY	\$600.00	\$600.00
TALIHINA, PRAIRIE GROVE	\$4,983.14	\$2,847.76
WHITESBORO	\$2,634.00	\$3,340.00
WISTER, BETHEL	\$3,490.53	\$3,623.56
WISTER, FIRST SOUTHERN	\$0.00	\$0.00
WISTER, HEART O' THE HILLS	\$1,576.77	\$1,575.97
WISTER, SUMMERFIELD	\$700.00	\$500.00
Totals	\$143,381.67	\$136,082.62

Metro Network Association

ARCADIA, FIRST SOUTHERN	\$12,526.05	\$12,487.45
BETHANY, COUNCIL ROAD	\$48,750.00	\$58,500.00
BETHANY, FIRST	\$14,754.98	\$15,563.93
BETHANY, FUENTE DE VIDA	\$495.78	\$376.32
BETHANY, MACEDONIA	\$0.00	\$0.00
BETHANY, NEW COVENANT FELLOWSHIP	\$377.50	\$556.50
BETHANY, ROCA FUERTE	\$0.00	\$0.00
BETHANY, TULAKES	\$2,971.60	\$3,914.69
CHOCTAW, CHOCTAW ROAD	\$152,428.87	\$138,903.67
CHOCTAW, EASTLAND HILLS	\$300.00	\$300.00
CHOCTAW, FIRST	\$56,729.64	\$50,575.42
DEL CITY, DEL VIEW	\$1,345.00	\$1,074.56
DEL CITY, FIRST SOUTHERN	\$49,130.32	\$60,420.88
DEL CITY, SOLOMON TEMPLE	\$0.00	\$0.00
DEL CITY, SUNNYLANE SOUTHERN	\$1,200.00	\$1,200.00
EDMOND, ACTS COMMUNITY	\$0.00	\$0.00
EDMOND, BETHESDA	\$0.00	\$0.00
EDMOND, CHISHOLM CREEK	\$600.00	\$700.00
EDMOND, EDMOND COMMUNITY	\$1,500.00	\$1,325.00
EDMOND, FIRST	\$100.00	\$500.00
EDMOND, FIRST BANGLA	\$487.00	\$559.00
EDMOND, FIRST INDIAN	\$0.00	\$0.00
EDMOND, HENDERSON HILLS	\$45,327.24	\$105,933.86
EDMOND, HIGHLAND PARK	\$5,605.97	\$4,680.09
EDMOND, HISPANA	\$4,022.00	\$3,817.00
EDMOND, KHORASAN CHURCH	\$0.00	\$0.00
EDMOND, NORTH POINTE	\$10,924.64	\$9,832.19
EDMOND, OAKDALE	\$50,215.30	\$58,149.34
EDMOND, UNBOUND	\$0.00	\$0.00
EDMOND, VINTAGE	\$0.00	\$2,100.00
EDMOND, WATERLOO ROAD	\$81,049.00	\$76,597.00
FOREST PARK, NORTHEAST MISSIONARY	\$2,952.00	\$369.00
GUTHRIE, CHARER OAK	\$0.00	\$0.00
GUTHRIE, COMMUNITY	\$0.00	\$0.00
GUTHRIE, FIRST SOUTHERN	\$20,110.84	\$4,706.17
GUTHRIE, LAKEVIEW	\$0.00	\$0.00
HARRAH, FIRST	\$28,492.72	\$28,023.95
HARRAH, LEGACY	\$100.00	\$0.00
JONES, FIRST	\$6,400.10	\$5,202.80
LUTHER, FIRST	\$1,500.00	\$1,000.00
MOORE, PHILIPPINE INTERNATIONAL	\$1,369.35	\$1,517.62
MUSTANG, CHISHOLM HEIGHTS	\$111,674.57	\$101,699.47
MUSTANG, FIRST	\$106,270.33	\$100,709.39
MUSTANG, MUSTANG HEIGHTS	\$7,436.02	\$8,218.91
MWC, COUNTRY ESTATES	\$34,706.01	\$31,597.91
MWC, CREST	\$1,662.53	\$1,263.49

Church	2024	2023
MWC, EASTPOINT	\$800.00	\$1,200.00
MWC, EASTWOOD	\$14,394.45	\$15,268.55
MWC, FIRST	\$30,365.60	\$34,657.30
MWC, KOREAN	\$0.00	\$602.00
MWC, LIGHTHOUSE	\$75.00	\$90.00
MWC, MEADOWOOD	\$56,423.00	\$67,732.00
MWC, NEW COMMUNITY	\$679.47	\$616.00
MWC, SOLDIER CREEK	\$0.00	\$4,887.78
MWC, SOONER	\$3,336.18	\$4,566.69
NEWALLA, COUNTRYSIDE	\$2,317.47	\$3,059.05
NEWALLA, FIRST	\$820.00	\$2,100.00
NICOMA PARK, FIRST	\$28,415.27	\$42,891.62
OKC TABERNACLE	\$1,200.00	\$600.00
OKC, BETHEL	\$0.00	\$0.00
OKC, BEVERLY HILLS	\$482.98	\$464.78
OKC, BRANCHES EASTSIDE	\$0.00	\$0.00
OKC, BRIDGEPOINT	\$600.00	\$400.00
OKC, BRIGHT CITY	\$0.00	\$0.00
OKC, BRITTON	\$1,216.67	\$451.79
OKC, BROOKWOOD	\$63,328.09	\$60,735.49
OKC, BRYANT AVENUE	\$400.00	\$600.00
OKC, CALVARY MISSIONARY	\$120.00	\$100.00
OKC, CAMILLE AVENUE	\$0.00	\$0.00
OKC, CAPITOL HILL	\$54,722.53	\$53,265.57
OKC, CENTRAL	\$978.10	\$1,691.40
OKC, CHEROKEE HILLS	\$72,959.62	\$44,917.04
OKC, CHINESE	\$0.00	\$44,006.43
OKC, CHURCH AT THE VILLAGE	\$4,726.80	\$2,550.50
OKC, CIRCLE OF LIFE	\$400.00	\$700.00
OKC, CLASSEN BOULEVARD	\$4,105.85	\$6,267.27
OKC, CRESTVIEW	\$6,192.19	\$5,950.85
OKC, CROSSROADS	\$600.00	\$1,200.00
OKC, CROSSTOWN	\$1,200.00	\$83.35
OKC, DEAF CHURCH	\$1,235.00	\$1,305.00
OKC, DICKSON	\$0.00	\$0.00
OKC, DUMAS AVENUE	\$0.00	\$0.00
SOUTHERN		
OKC, EAGLE HEIGHTS	\$6,990.00	\$6,000.00
OKC, EL OLIVAR	\$0.00	\$0.00
OKC, EMANUEL HISPANIC	\$3,498.60	\$3,701.75
OKC, EXCHANGE AVENUE	\$16,355.48	\$14,050.99
OKC, FAITHWORKS	\$0.00	\$0.00
OKC, FIRST HISPANIC	\$0.00	\$0.00
OKC, FORTIETH STREET	\$0.00	\$0.00
OKC, FREEDOM WORSHIP	\$0.00	\$0.00
OKC, GIDEON	\$185.00	\$295.00
OKC, GLORIETA	\$10,047.00	\$14,485.00
OKC, GRACE AND TRUTH	\$0.00	\$0.00
OKC, GRACE PLACE	\$1,999.98	\$2,599.98
OKC, GRACE POINTE	\$0.00	\$0.00
OKC, GREATER TRINITY	\$0.00	\$0.00
OKC, HEAVENLY HEIGHTS	\$4,232.32	\$2,927.79
OKC, HERITAGE	\$3,200.00	\$3,000.00
OKC, HIGHLAND HILLS	\$6,278.91	\$5,537.50
OKC, HOWARD MEMORIAL	\$995.25	\$1,167.76
OKC, IGLESIA BAUTISTA CENTRAL	\$5,192.33	\$3,373.69
OKC, IGLESIA BAUTISTA GLORIA DE DIOS	\$0.00	\$100.00
OKC, IGLESIA LAVILLA	\$175.76	\$211.24
OKC, IGLESIA PALABRA VIVA	\$432.50	\$563.95
OKC, INDIAN COMMUNITY	\$1,929.67	\$1,591.32
OKC, INTERNATIONAL COMMUNITY	\$1,576.00	\$2,284.00
OKC, INTERNATIONAL GRACE	\$0.00	\$0.00
OKC, JAPANESE MISSION	\$0.00	\$292.90
OKC, JESUS ES EL CAMINO	\$929.00	\$1,089.00
OKC, KELHAM	\$11,041.08	\$8,126.26
OKC, KENTUCKY AVENUE	\$0.00	\$0.00
OKC, KNOB HILL	\$0.00	\$0.00
OKC, KOREAN LIGHTHOUSE	\$0.00	\$0.00
OKC, LAO-THAI	\$275.00	\$175.00
OKC, LONE STAR	\$57.85	\$207.64

Church	2024	2023
OKC, MAYRIDGE	\$15,616.00	\$11,944.00
OKC, MISSION OKC	\$300.00	\$250.00
OKC, NEW BETHEL	\$0.00	\$0.00
OKC, NEW LIFE MISSION	\$0.00	\$0.00
OKC, NEW VISION COMMUNITY	\$3,036.50	\$2,948.00
OKC, NEWCHURCH	\$800.00	\$1,000.00
OKC, NORTHWEST	\$66,030.99	\$58,610.86
OKC, NUEVA VIDA	\$910.09	\$796.25
OKC, OIKOS	\$0.00	\$0.00
OKC, OKLAHOMA ZOTUNG	\$0.00	\$2,367.65
OKC, OLIVET	\$12,120.11	\$6,402.00
OKC, PLAINVIEW	\$4,812.36	\$4,784.04
OKC, PORTLAND AVENUE	\$19,444.80	\$16,168.88
OKC, PROSPECT	\$0.00	\$0.00
OKC, PUTNAM CITY	\$27,776.90	\$14,049.34
OKC, QUAIL SPRINGS	\$422,369.17	\$549,914.72
OKC, RIOS DE AGUA VIVA	\$1,681.25	\$2,059.56
OKC, ROCKWOOD	\$0.00	\$0.00
OKC, SHARON	\$0.00	\$0.00
OKC, SHIELDS BOULEVARD	\$2,317.02	\$2,355.43
OKC, SOUTH LINDSAY	\$7,920.64	\$8,949.33
OKC, SOUTH OKLAHOMA CITY	\$0.00	\$204.59
OKC, SOUTHERN HILLS	\$332,227.24	\$333,618.10
OKC, SOUTHERN TEMPLE	\$600.00	\$600.00
OKC, SPRING CREEK	\$0.00	\$0.00
OKC, SPRINGDALE	\$5,100.00	\$3,275.45
OKC, THRIVE	\$6,617.04	\$2,747.46
OKC, TRINITY	\$1,657.13	\$656.26
OKC, TRINITY CHINESE	\$991.32	\$1,271.60
OKC, TRINITY MISSIONARY	\$0.00	\$0.00
OKC, TRUE LIGHT	\$71.10	\$30.00
OKC, VICTORY	\$925.00	\$2,587.00
OKC, VIETNAMESE FIRST	\$0.00	\$0.00
OKC, VILLAGE	\$22,533.54	\$38,765.36
OKC, VISION COMMUNITY	\$0.00	\$0.00
OKC, WESTERN AVENUE	\$300.00	\$100.00
OKC, WILMONT PLACE	\$16,680.27	\$19,996.33
OKC, ZOMI CHRISTIAN	\$2,230.45	\$2,423.43
PIEDMONT, FIRST	\$17,747.65	\$21,661.59
SPENCER, TRUELOVE	\$0.00	\$0.00
WHEATLAND, FIRST	\$4,283.39	\$2,356.13
YUKON, CANADIAN VALLEY	\$2,963.37	\$2,684.90
YUKON, FIRST	\$27,322.21	\$24,182.98
YUKON, REFUGE	\$4,828.86	\$5,896.17
YUKON, SURREY HILLS	\$18,745.41	\$20,353.22
YUKON, TOGETHER WE CHURCH	\$44,684.52	\$25,723.66
Totals	\$2,558,851.13	

Mullins Association

ADDINGTON	\$0.00	\$2,261.50
COMANCHE, CORUM	\$930.27	\$2,289.67
COMANCHE, COUNTRYSIDE	\$11,543.10	\$8,486.65
COMANCHE, FIRST	\$5,329.00	\$5,907.00
COMANCHE, PATTERSON	\$8,301.57	\$8,307.79
COUNTYLINE, FIRST	\$0.00	\$0.00
DUNCAN, CHISHOLM TRAIL COWBOY	\$0.00	\$0.00
DUNCAN, EL DIVINO SALVADOR	\$500.00	\$550.00
DUNCAN, FAIR	\$4,885.94	\$7,421.49
DUNCAN, FIRST	\$33,798.67	\$40,743.80
DUNCAN, FREEDOM BIKER	\$2,500.00	\$3,000.00
DUNCAN, GRACE	\$0.00	\$0.00
DUNCAN, HIGHLAND PARK	\$0.00	\$3,092.12
DUNCAN, IMMANUEL	\$1,593.84	\$1,798.26
DUNCAN, LIBERTY	\$5,036.68	\$4,125.19
DUNCAN, NEW HOPE WEST	\$114,111.66	\$109,367.17
DUNCAN, PARKVIEW	\$5,050.93	\$4,899.78
DUNCAN, TRINITY	\$0.00	\$0.00
DUNCAN, WESTERN HEIGHTS	\$345.17	\$671.18
HASTINGS	\$4,665.62	\$4,941.81
IRVING, FIRST	\$4,242.62	\$6,874.34
MARLOW, CENTRAL	\$18,453.23	\$18,326.59

Church	2024	2023
MARLOW, EASTSIDE	\$11,777.45	\$10,701.91
MARLOW, FIRST	\$62,500.00	\$75,000.00
MARLOW, LAKESIDE	\$2,381.92	\$3,667.79
MERIDIAN, FIRST	\$200.00	\$200.00
RYAN, FIRST	\$0.00	\$0.00
TERRAL, FIRST	\$4,018.24	\$3,013.24
VELMA	\$24,808.71	\$47,256.81
WAURIKA, FIRST	\$6,915.91	\$8,242.43
Totals	\$333,890.53	\$381,146.52

Muscogee-Seminole-Wichita Association

ANADARKO, ROCK SPRING	\$0.00	\$0.00
BOWLEGS, CEDAR CREEK	\$0.00	\$0.00
BRAGGS, SAND SPRING	\$0.00	\$0.00
BRISTOW, TRUE VINE INDIAN	\$0.00	\$0.00
BUNCH, BEAVER INDIAN	\$0.00	\$0.00
CALVIN, TOOKPARFKA	\$200.00	\$300.00
CHECOTAH, DEEP FORK	\$0.00	\$0.00
HILLABEE		
CROMWELL, LITTLE QUARSARTY	\$0.00	\$0.00
EUFALA, ARTUSSEE	\$0.00	\$0.00
EUFALA, LITTLE COWETA INDIAN	\$0.00	\$0.00
EUFALA, NEW ARBOR INDIAN	\$0.00	\$0.00
EUFALA, OKFUSKEE	\$0.00	\$0.00
EUFALA, TUSKEGEE	\$0.00	\$0.00
EUFALA, WEST EUFAULA INDIAN	\$0.00	\$0.00
HANNA, WEOGUFKEE	\$275.00	\$275.00
HENRYETTA, SILVER SPRING	\$1,835.00	\$1,196.25
KONAWA, BETHLEHEM	\$0.00	\$0.00
LAMAR, MIDDLE CREEK #1	\$0.00	\$0.00
MUSKOGEE, BUTLER CREEK	\$0.00	\$0.00
OKEMAH, ALL NATIONS	\$0.00	\$0.00
OKEMAH, BUCKEYEE CREEK	\$916.00	\$0.00
OKEMAH, MONTESOMA	\$600.00	\$600.00
OKMULGEE, BELVIN	\$804.12	\$749.75
SAND SPRINGS, WEKIWA	\$0.00	\$0.00
SAPULPA, COMMUNITY INDIAN	\$0.00	\$0.00
SAPULPA, LITTLE CUSSETAH	\$0.00	\$0.00
SASAKWA, SPRING	\$630.00	\$650.89
STIDHAM, BIG ARBOR INDIAN	\$820.71	\$622.50
VIAN CREEK	\$0.00	\$0.00
WETUMKA, INDIAN	\$985.32	\$1,202.54
WETUMKA, SAND CREEK INDIAN	\$0.00	\$0.00
WEWOKA, AKASVMKV	\$323.00	\$134.00
Totals	\$7,389.15	\$5,730.93

Muskogee Association

BRAGGS, FIRST	\$1,541.00	\$1,770.00
CHECOTAH, BRUSH HILL	\$1,676.48	\$1,980.37
CHECOTAH, FIRST	\$16,733.62	\$19,033.69
CHECOTAH, HOPE	\$727.05	\$565.62
CHECOTAH, ONAPA	\$864.06	\$573.59
COUNCIL HILL, ELM GROVE	\$6,863.74	\$7,158.43
COWETA, FIRST	\$33,133.60	\$27,487.92
COWETA, LONE STAR	\$6,215.47	\$4,994.16
FORT GIBSON, FIRST	\$14,647.13	\$14,569.25
FORT GIBSON, SOUTH RIDGE	\$2,005.76	\$1,637.46
HASKELL, FIRST	\$3,750.00	\$3,750.00
HASKELL, STONEBLUFF	\$1,702.47	\$1,411.81
HITCHITA, FIRST	\$0.00	\$0.00
HULBERT, FIRST	\$5,139.77	\$7,527.51
HULBERT, NORWOOD LAKEVIEW	\$4,285.86	\$3,039.27
MUSKOGEE, ALL NATIONS	\$346.94	\$260.79
MUSKOGEE, ANTIOCH	\$0.00	\$250.00
MUSKOGEE, ASH STREET	\$1,200.00	\$1,300.00
MUSKOGEE, BOSTON AVENUE	\$300.00	\$477.85
MUSKOGEE, BRUSHY MOUNTAIN	\$268.00	\$0.00
MUSKOGEE, CALVARY	\$1,646.36	\$1,804.48
MUSKOGEE, CENTRAL	\$123.18	\$118.22
MUSKOGEE, EASTERN HEIGHTS	\$14,717.97	\$21,455.69

Church	2024	2023
MUSKOGEE, FAIRVIEW	\$2,539.67	\$2,223.66
MUSKOGEE, FIRST	\$78,113.13	\$81,536.46
MUSKOGEE, FIRST INDIAN	\$200.00	\$37.06
MUSKOGEE, GRACE	\$0.00	\$0.00
MUSKOGEE, GRANDVIEW	\$3,968.00	\$8,537.00
MUSKOGEE, IGLESIA BAUTISTA HISPANA	\$214.60	\$350.00
MUSKOGEE, IMMANUEL	\$827.64	\$581.52
MUSKOGEE, KEEFETON TRINITY	\$10,172.00	\$8,804.00
MUSKOGEE, MEADOWBROOK	\$0.00	\$0.00
MUSKOGEE, MOUNTAIN VIEW	\$3,371.96	\$2,623.95
MUSKOGEE, NEW HOPE	\$12,333.77	\$8,551.66
MUSKOGEE, OLDHAM MEMORIAL	\$14,581.37	\$11,890.77
MUSKOGEE, SOUTHEAST	\$33,645.90	\$38,475.24
MUSKOGEE, THREE RIVERS COWBOY	\$0.00	\$0.00
MUSKOGEE, TIMOTHY	\$9,200.00	\$10,750.00
OKAY, FIRST	\$3,995.65	\$3,534.93
OKTAHA, TRINITY	\$20.00	\$0.00
PORTER, FIRST	\$2,571.20	\$2,700.08
PORUM, FRIENDSHIP CHAPEL	\$694.10	\$575.50
TAHLEQUAH, CRESCENT VALLEY	\$7,050.00	\$6,250.00
TAHLEQUAH, CRESCENT VALLEY CITY CAMPUS	\$0.00	\$0.00
WAGONER, FIRST	\$3,600.00	\$3,425.00
WAGONER, IMMANUEL SOUTHERN	\$2,020.40	\$2,401.25
WAGONER, TWIN OAKS	\$1,456.62	\$0.00
WAINWRIGHT, FIRST	\$380.13	\$727.13
WARNER, FIRST	\$10,662.30	\$8,639.06
WEBBERS FALLS, FIRST	\$11,213.29	\$10,792.36
WEBBERS FALLS, GREEN VALLEY	\$0.00	\$3,463.88
Totals	\$330,720.19	\$338,226.96

North Canadian Association

BEGGS, CROSSROADS	\$15,467.17	\$17,608.22
BEGGS, FIRST	\$0.00	\$0.00
BEGGS, NATURA	\$2,316.39	\$2,511.00
BOYNTON, ERAM	\$470.00	\$353.00
CASTLE	\$3,947.18	\$2,971.81
DEWAR, FIRST	\$17,213.46	\$14,819.07
DUSTIN, FIRST	\$1,211.82	\$1,113.32
HENRYETTA, FIRST	\$0.00	\$0.00
HENRYETTA, IMMANUEL	\$636.53	\$982.86
HENRYETTA, SALEM	\$300.00	\$300.00
HENRYETTA, WILSON	\$2,375.50	\$2,961.50
HOFFMAN, FIRST	\$292.17	\$0.00
KIEFER, FIRST	\$991.12	\$650.14
MORRIS, FIRST	\$4,081.89	\$2,912.44
MORRIS, LIBERTY	\$1,663.36	\$1,518.00
MORRIS, TRINITY	\$2,945.96	\$3,696.86
OKEMAH, CALVARY	\$0.00	\$0.00
OKEMAH, FIRST	\$17,444.26	\$14,191.01
OKEMAH, LAST CHANCE	\$8,469.00	\$6,211.00
OKEMAH, SKYVIEW	\$738.06	\$704.09
OKMULGEE, CALVARY	\$7,234.13	\$10,999.11
OKMULGEE, CLEARVIEW	\$500.00	\$600.00
OKMULGEE, FIRST	\$16,102.45	\$16,479.75
OKMULGEE, NUYAKA	\$2,400.00	\$2,400.00
OKMULGEE, OLD POST COWBOY	\$250.00	\$300.00
OKMULGEE, SECOND	\$4,596.09	\$1,625.97
OKMULGEE, TWIN HILLS	\$1,400.00	\$1,400.00
PADEN, FIRST	\$9,592.59	\$10,047.46
PHAROAH	\$1,548.00	\$1,287.00
PRESTON, FIRST	\$2,983.00	\$2,663.00
SCHULTER	\$2,666.19	\$0.00
SCHULTER, CEDAR CREEK	\$85.00	\$55.00
WELEETKA, FIRST	\$3,259.76	\$2,490.00
Totals	\$133,181.08	\$123,851.61

Northeastern Association

AFTON, FIRST	\$3,688.00	\$3,171.00
--------------	------------	------------

Church	2024	2023
AFTON, TRINITY SOUTHERN	\$2,535.23	\$3,226.11
ANDERSON, BUFFALO CREEK	\$6,267.77	\$5,365.12
BERNICE, FIRST	\$500.00	\$500.00
CARDIN, FIRST	\$4,691.00	\$5,502.00
COLCORD, FIRST	\$225.00	\$100.00
COMMERCE, FIRST	\$2,796.00	\$2,551.00
COMMERCE, SOUTHEAST	\$1,727.94	\$2,226.51
EUCHA, SOUTH GRAND LAKE	\$2,949.31	\$3,037.23
FAIRLAND, FIRST	\$884.80	\$1,050.85
FAIRLAND, HUDSON CREEK	\$1,559.74	\$1,457.07
GROVE, DELAWARE	\$10,499.29	\$10,378.03
GROVE, DODGE	\$569.85	\$458.40
GROVE, ELK RIVER	\$1,460.83	\$1,995.92
GROVE, FIRST	\$45,102.23	\$40,991.25
GROVE, GRAND LAKE	\$1,148.27	\$1,128.50
GROVE, TRINITY	\$2,100.00	\$2,100.00
JAY, FIRST	\$6,749.44	\$6,654.96
JAY, NEW HOPE	\$1,448.41	\$1,603.73
JAY, WHITEWATER	\$0.00	\$0.00
JAY, ZENA	\$1,640.27	\$1,853.25
KANSAS, CROSSTIES	\$0.00	\$0.00
KANSAS, FIRST	\$2,739.45	\$2,780.80
LEACH, FIRST	\$3,050.82	\$1,552.00
MIAMI, EASTSIDE	\$3,993.00	\$4,824.12
MIAMI, FIRST	\$12,391.42	\$14,675.09
MIAMI, GREEN ACRES	\$1,019.83	\$1,163.58
MIAMI, IMMANUEL	\$2,722.65	\$3,619.37
MIAMI, LIBERTY	\$50.00	\$0.00
MIAMI, LONE STAR	\$3,482.56	\$3,442.30
MIAMI, MICRONESIAN	\$55.00	\$25.00
MIAMI, MOUND VALLEY	\$633.00	\$1,152.00
MIAMI, MOUNT ZION	\$1,694.50	\$1,680.50
MIAMI, NARCISSA	\$667.55	\$662.81
MIAMI, NORTHWEST	\$30.00	\$453.95
MIAMI, OTTAWA INDIAN	\$0.00	\$0.00
MIAMI, SOUTHEAST	\$125.00	\$130.00
MIAMI, SOUTHERN HILLS	\$3,142.32	\$3,394.02
MIAMI, TWO RIVERS	\$0.00	\$437.71
MONKEY ISLAND, LAKE CENTER	\$5,650.13	\$2,611.19
QUAPAW, FIRST	\$15,135.85	\$16,434.73
QUAPAW, SPRING RIVER INDIAN	\$611.00	\$921.00
WEST SILOAM SPRINGS, CALVARY	\$9,588.19	\$9,825.20
WYANDOTTE, FIRST	\$2,083.31	\$2,916.65
Totals	\$167,408.96	\$168,052.95

Northwestern Association

ALVA, FIRST	\$15,257.06	\$0.00
ARNETT, FIRST	\$4,275.47	\$2,193.89
BUFFALO, FIRST	\$4,237.62	\$4,368.68
FORT SUPPLY	\$7,009.55	\$5,065.77
GAGE, FIRST	\$3,535.00	\$3,905.00
LAVERNE, FIRST	\$1,841.62	\$2,819.70
MOORELAND, FIRST	\$22,522.87	\$25,567.62
SEILING, FIRST	\$4,156.00	\$3,269.00
SHARON, FIRST	\$0.00	\$0.00
SHARON, SOUTH PERSIMMON	\$300.00	\$500.00
SHATTUCK, FIRST	\$4,409.97	\$3,341.77
VICI, FIRST	\$907.80	\$1,405.97
WOODWARD, ASCENT	\$0.00	\$500.00
WOODWARD, CROWN HEIGHTS	\$1,285.11	\$1,792.92
WOODWARD, ELM STREET	\$0.00	\$13.51
WOODWARD, FIRST	\$24,999.96	\$25,000.02
WOODWARD, LINCOLN AVENUE	\$11,013.74	\$14,038.72
WOODWARD, VIDA ABUNDANTE	\$566.75	\$0.00
Totals	\$106,318.52	\$93,782.57

Panhandle Association

BALKO	\$0.00	\$0.00
BEAVER, FIRST	\$7,684.21	\$5,273.95
BEAVER, IGLESIA BAUTISTA	\$0.00	\$0.00

Church	2024	2023
BOISE CITY, FIRST	\$6,514.56	\$10,063.36
BOISE CITY, PRIMERA HISPANA	\$300.00	\$300.00
BOISE CITY, WHEELLESS	\$1,485.48	\$1,212.08
FELT, FIRST	\$14,387.64	\$6,790.83
FORGAN, FIRST	\$6,677.67	\$5,909.68
GOODWELL, FIRST	\$1,962.31	\$1,877.22
GUYPON, FIRST	\$29,341.00	\$8,890.00
GUYPON, FIRST HISPANIC	\$2,168.69	\$2,341.73
GUYPON, GRACE SOUTHERN	\$0.00	\$892.99
GUYPON, SUNSET LANE	\$14,866.39	\$14,118.21
HARDESTY, BETHEL	\$2,481.05	\$2,670.97
HARDESTY, FIRST	\$0.00	\$0.00
HOOKE, FIRST	\$2,800.33	\$2,238.97
KENTON	\$0.00	\$0.00
KEYES, FIRST	\$7,363.89	\$10,276.53
TEXHOMA, FIRST	\$1,005.06	\$1,188.75
TURPIN, FIRST	\$5,784.38	\$5,681.96
TYRONE	\$351.43	\$0.00
Totals	\$105,174.09	\$79,727.23

Pittsburg Association

BLANCO	\$0.00	\$0.00
BLOCKER	\$200.00	\$1,200.00
CANADIAN, FIRST SOUTHERN	\$2,321.10	\$2,223.75
CROWDER, FIRST	\$9,096.72	\$6,520.25
EUFULA, LENNA	\$1,025.80	\$1,396.49
EUFULA, LINDSEY CHAPEL	\$4.00	\$6.00
EUFULA, NORTH FORK	\$9,499.98	\$4,500.00
EUFULA, OAK RIDGE	\$2,830.42	\$1,887.82
EUFULA, STIDHAM	\$1,350.00	\$1,125.00
EUFULA, VIVIAN	\$1,210.94	\$1,055.00
HAILEYVILLE, FIRST	\$589.68	\$604.04
HANNA, FIRST	\$1,989.90	\$1,859.20
HARTSHORNE, ADAMSON	\$1,148.80	\$1,081.20
HARTSHORNE, CORNERSTONE	\$708.32	\$1,099.06
HARTSHORNE, FIRST	\$428.81	\$398.31
HAYWOOD	\$4,388.97	\$5,438.23
INDIANOLA, FIRST	\$3,791.17	\$3,698.66
KIOWA, FIRST	\$2,092.47	\$1,955.55
KREBS, FIRST	\$1,011.18	\$884.46
KREBS, RICHVILLE	\$4,075.57	\$4,198.85
MCALESTER, ARPELAR	\$92.73	\$58.35
MCALESTER, CALVARY	\$132.50	\$300.00
MCALESTER, CHOATE PRAIRIE	\$3,496.56	\$2,091.84
MCALESTER, COMMUNITY	\$278.35	\$194.12
MCALESTER, DOW	\$815.33	\$834.98
MCALESTER, EMMANUEL	\$0.00	\$0.00
MCALESTER, FIRST	\$123,014.90	\$32,708.48
MCALESTER, FRINK	\$3,629.00	\$4,621.65
MCALESTER, HIGH HILL	\$1,138.13	\$807.73
MCALESTER, HILLCREST	\$641.02	\$233.04
MCALESTER, KIAMICHI COUNTRY COWBOY	\$0.00	\$0.00
MCALESTER, MEKKO	\$0.00	\$0.00
MCALESTER, SCIPIO	\$3,051.58	\$2,762.76
MCALESTER, VICTORY PARK	\$16,158.90	\$11,381.42
PITTSBURG	\$0.00	\$0.00
PITTSBURG, TI VALLEY	\$714.00	\$1,137.00
SAVANNA, FIRST	\$3,164.71	\$2,939.33
STUART, ASHLAND	\$251.00	\$314.96
STUART, FIRST	\$153.22	\$319.38
WARDVILLE, HARPERS VALLEY	\$3,316.99	\$2,965.42
Totals	\$207,812.75	\$104,802.33

Pottawatomie-Lincoln Association

AGRA, FIRST	\$6,889.29	\$0.00
ASHER, FIRST	\$4,487.65	\$4,331.61
BETHEL ACRES, NEW HOPE	\$11,372.01	\$9,113.34
CARNEY, FIRST	\$228.69	\$666.36
CHANDLER, FIRST	\$26,952.96	\$35,661.53
CHANDLER, SOUTHERN	\$8,062.71	\$5,869.10
DALE	\$671.62	\$828.45
DAVENPORT, FIRST	\$9,769.02	\$10,819.60
EARLSBORO, FAIRVIEW	\$11,694.95	\$9,391.06

Church	2024	2023
EARLSBORO, FIRST	\$0.00	\$0.00
EARLSBORO, INDIAN	\$300.00	\$400.00
HARRAH, FAITH	\$11,160.98	\$9,454.59
MACOMB, ROMULUS	\$3,199.30	\$3,670.31
MAUD, FIRST	\$0.00	\$384.63
MAUD, TRINITY	\$5,656.00	\$6,744.15
MCCLOUD, EMMANUEL	\$4,456.64	\$4,558.83
MCCLOUD, EMMAUS INDIAN	\$2,619.92	\$2,181.01
MCCLOUD, FIRST	\$4,215.76	\$4,726.05
MCCLOUD, HAZEL DELL	\$8,156.48	\$6,019.64
MCCLOUD, HILLSIDE	\$1,530.92	\$1,221.00
MEEKER, FIRST	\$7,657.00	\$11,282.00
MEEKER, MAMMOTH	\$18,949.16	\$21,708.94
NEWALLA, NEW LIFE	\$2,923.14	\$1,637.85
NEWALLA, PECAN VALLEY	\$250.00	\$300.00
PRAGUE, FIRST	\$47,742.61	\$47,972.41
PRAGUE, PLEASANT HOME	\$2,784.02	\$1,700.87
SAINT LOUIS, FIRST	\$3,111.28	\$4,887.68
SHAWNEE, AYDELOTTE	\$2,578.93	\$3,968.41
SHAWNEE, BIBLE	\$300.06	\$300.06
SHAWNEE, BLACKBURN CHAPEL	\$7,611.87	\$5,922.61
SHAWNEE, FIRST INDIAN	\$0.00	\$0.00
SHAWNEE, GALILEE	\$4,500.00	\$6,000.00
SHAWNEE, HERITAGE FIRST	\$7,924.00	\$6,818.49
SHAWNEE, HILLTOP	\$8,780.31	\$5,404.17
SHAWNEE, HOPEWELL	\$703.74	\$0.00
SHAWNEE, IMMANUEL	\$186,583.17	\$161,733.83
SHAWNEE, MOUNT PLEASANT	\$1,167.09	\$1,296.75
SHAWNEE, OAKLAND CHAPEL	\$0.00	\$0.00
SHAWNEE, ROCK CREEK	\$15,753.11	\$19,456.18
SHAWNEE, ROCK CREEK HISPANIC	\$603.47	\$577.07
SHAWNEE, SALLATEESKA	\$940.00	\$855.00
SHAWNEE, SHARON	\$25,734.84	\$29,391.88
SHAWNEE, TEMPLE	\$10,681.33	\$12,289.35
SHAWNEE, TRINITY	\$2,253.83	\$3,527.52
SHAWNEE, UNION MISSIONARY	\$0.00	\$0.00
SHAWNEE, UNIVERSITY	\$16,549.16	\$15,753.50
SHAWNEE, WALLACE AVENUE	\$14,340.62	\$13,839.51
SPARKS, FIRST	\$955.89	\$1,432.63
STROUD, DEER CREEK	\$11,851.08	\$11,826.84
STROUD, FIRST	\$19,094.55	\$17,433.35
TECUMSEH, FIRST	\$9,416.49	\$7,832.09
TECUMSEH, KARIS MINISTRIES	\$0.00	\$0.00
TECUMSEH, PINK	\$1,071.32	\$1,487.07
TRYON, FIRST	\$451.68	\$985.67
WANETTE, FIRST	\$5,177.31	\$5,128.66
WANETTE, VICTORY POINTE	\$125.00	\$0.00
WELLSTON, CORNERSTONE	\$0.00	\$0.00
WELLSTON, FIRST	\$0.00	\$0.00
WELLSTON, TRINITY	\$1,620.00	\$1,620.00
Totals	\$561,610.96	\$540,411.65

Rogers Association

ALLUWE	\$0.00	\$0.00
CATOOSA, FIRST	\$4,017.00	\$1,295.00
CATOOSA, OAK GROVE	\$6,701.25	\$6,109.48
CATOOSA, SHIELD OF FAITH	\$996.00	\$955.72
CHELSEA, FIRST	\$0.00	\$0.00
CHELSEA, HARBOR	\$1,050.00	\$1,050.00
CHELSEA, WINGANON	\$1,092.53	\$549.90
CLAREMORE, EASTERN HILLS	\$0.00	\$1,271.56
CLAREMORE, EMMANUEL	\$720.57	\$0.00
CLAREMORE, FAITH	\$6,815.56	\$6,069.39
CLAREMORE, FIRST	\$146,463.92	\$144,384.62
CLAREMORE, HILLDALE	\$4,474.76	\$4,519.90
CLAREMORE, MEMORIAL HEIGHTS	\$19,474.29	\$16,216.86
CLAREMORE, MIDWAY	\$100.00	\$143.30
CLAREMORE, NEW LIFE	\$12,932.55	\$12,776.82
CLAREMORE, NORTH PARK TRINITY	\$969.13	\$557.37
CLAREMORE, OWALLA ROAD	\$0.00	\$0.00

Church	2024	2023
CLAREMORE, SAGEEYAH	\$2,917.78	\$5,803.88
CLAREMORE, SEQUOYAH	\$3,148.33	\$3,136.49
CLAREMORE, TIWAHA	\$1,874.00	\$1,937.00
CLAREMORE, WASHINGTON	\$2,154.47	\$1,288.90
CLAREMORE, WILLIEO	\$0.00	\$0.00
DELAWARE, FIRST	\$0.00	\$0.00
FOYIL	\$935.04	\$749.81
INOLA, CALVARY	\$9,277.66	\$10,908.56
INOLA, FIRST	\$34,924.35	\$35,536.74
OLOGAH, FIRST	\$11,133.42	\$8,557.61
OLOGAH, HARBOR	\$5,400.00	\$5,400.00
TALALA, FIRST	\$2,908.33	\$2,426.70
TALALA, RABBS CREEK	\$0.00	\$0.00
TULSA, LYNN LANE	\$4,239.36	\$3,610.41
VERDIGRIS, FIRST	\$11,440.04	\$9,778.18
Totals	\$296,160.34	\$285,034.20

Salt Fork Association

CLEO SPRINGS	\$359.16	\$158.28
FAIRVIEW, ORION	\$925.05	\$803.44
HELENA, FIRST	\$1,395.00	\$1,494.00
LAHOMA, FIRST	\$1,270.71	\$1,434.19
NASH, BETHEL HAWLEY	\$11,429.08	\$10,689.27
NASH, FIRST	\$1,959.48	\$3,101.06
WAKITA, FIRST	\$2,527.00	\$2,770.00
WAYNOKA, FIRST	\$8,199.50	\$10,730.17
Totals	\$28,064.98	\$31,180.41

Sans Bois Association

ENTERPRISE	\$420.00	\$360.00
GOWEN	\$1,276.73	\$1,202.33
KEOTA, FIRST	\$6,936.50	\$6,354.65
KEOTA, UNITY	\$2,071.00	\$2,169.00
KINTA, FIRST	\$0.00	\$425.79
LEFLORE, THESSALONIAN	\$1,414.92	\$424.84
LEQUIRE	\$1,645.82	\$1,455.66
MCCURTAIN, FIRST	\$0.00	\$1,948.00
PANOLA	\$878.80	\$689.79
PORUM, FIRST	\$1,992.09	\$2,644.47
QUINTON, FEATHERSTONE	\$651.00	\$722.00
QUINTON, FIRST	\$3,348.82	\$0.00
QUINTON, WEST LIBERTY	\$10,157.00	\$7,748.00
RED OAK, FIRST	\$8,938.32	\$9,415.15
RED OAK, NORTH ROCK CREEK	\$546.00	\$918.25
STIGLER, ANTIOCH	\$1,054.36	\$935.38
STIGLER, FIRST	\$11,844.35	\$15,624.31
STIGLER, MAIN STREET	\$6,739.60	\$6,059.30
STIGLER, MOUNTAIN HOME	\$0.00	\$0.00
STIGLER, ROCKY RIDGE	\$218.55	\$300.70
STIGLER, TRINITY	\$1,317.00	\$1,326.00
WHITEFIELD	\$6,708.90	\$7,030.64
WILBURTON, BOWERS	\$12,007.58	\$9,922.26
WILBURTON, CALVARY	\$1,315.84	\$1,792.58
WILBURTON, CENTER POINT	\$5,501.82	\$5,391.38
WILBURTON, FIRST	\$4,976.78	\$5,171.70
WILBURTON, GRACE COUNTRY COWBOY	\$0.00	\$0.00
WILBURTON, HIGH BRIDGE	\$221.89	\$90.48
WILBURTON, SOUTHSIDE	\$0.00	\$0.00
Totals	\$92,183.67	\$90,122.66

South Canadian Association

ATWOOD, FIRST	\$2,688.80	\$1,455.45
BOWLEGS, FIRST	\$75.00	\$100.00
CALVIN, FIRST	\$4,866.96	\$5,826.33
CROMWELL, FIRST	\$2,164.56	\$12,813.95
DUSTIN, FAITH	\$0.00	\$0.00
HOLDENVILLE, BANNER	\$2,097.34	\$2,229.10
HOLDENVILLE, CALVARY	\$1,860.05	\$2,013.01
HOLDENVILLE, EBEN-EZER	\$632.78	\$2,452.90
HOLDENVILLE, FIRST	\$3,791.67	\$4,275.00
HOLDENVILLE, FIRST INDIAN	\$0.00	\$0.00
HOLDENVILLE, FREEDOM CROSSROADS BIKER	\$385.25	\$345.00

Church	2024	2023
HOLDENVILLE, MANY SPRINGS INDIAN	\$425.00	\$450.00
HOLDENVILLE, PENN WEST	\$722.12	\$1,200.01
KONAWA, FIRST	\$1,968.07	\$1,981.13
KONAWA, VAMOOSA	\$0.00	\$3,000.00
LAMAR, CARSON	\$8,770.83	\$5,699.88
LAMAR, FIRST	\$1,567.74	\$1,707.92
SASAKWA, FIRST	\$1,949.00	\$1,483.00
SEMINOLE, FIRST	\$22,026.96	\$19,255.32
SEMINOLE, HARVEY ROAD	\$3,037.54	\$3,297.96
SEMINOLE, HIGHWAY	\$4,400.00	\$5,181.00
SEMINOLE, IDEAL STREET	\$0.00	\$0.00
SEMINOLE, IGLESIA BAUTISTA ZION	\$1,394.00	\$1,413.00
SEMINOLE, INDIAN NATIONS	\$1,991.00	\$1,377.00
SEMINOLE, TRINITY	\$1,883.19	\$694.76
SEMINOLE, TWIN OAK	\$1,625.00	\$1,950.00
WETUMKA, FIRST	\$1,929.51	\$1,820.00
WEWOKA, CORNERSTONE MISSIONARY	\$0.00	\$0.00
WEWOKA, FIRST	\$3,864.00	\$4,074.00
WEWOKA, MIDWAY	\$1,855.00	\$1,948.94
Totals	\$77,971.37	\$88,044.66

Tulsa Metro Network Association

BIXBY, BIXBY CHURCH	\$0.00	\$2,296.00
BIXBY, BROKEN RICE	\$1,500.00	\$0.00
BIXBY, CROSSROADS	\$0.00	\$4,680.20
BIXBY, EVERGREEN	\$227,212.00	\$197,117.00
BIXBY, FIRST	\$0.00	\$0.00
BIXBY, NEW BEGINNINGS	\$1,000.00	\$600.00
BIXBY, RIVERVIEW	\$33,076.55	\$30,851.61
BROKEN ARROW, AGAPE CHINESE	\$0.00	\$1,000.00
BROKEN ARROW, ANTHEM CHURCH	\$3,050.00	\$3,200.00
BROKEN ARROW, ARROW HEIGHTS	\$73,036.82	\$77,176.90
BROKEN ARROW, ASPEN PARK	\$12,404.00	\$13,292.00
BROKEN ARROW, BATTLECREEK CHURCH	\$0.00	\$0.00
BROKEN ARROW, CLEARVIEW	\$12,799.80	\$11,903.00
BROKEN ARROW, COUNTY LINE	\$0.00	\$0.00
BROKEN ARROW, DEAF CHURCH AT BATTLE	\$0.00	\$0.00
BROKEN ARROW, EMMANUEL ZO	\$3,843.00	\$3,155.00
BROKEN ARROW, FIRST	\$180,249.58	\$162,838.34
BROKEN ARROW, FOREST RIDGE	\$1,695.11	\$1,193.60
BROKEN ARROW, GLORYLAND	\$570.00	\$423.00
BROKEN ARROW, KOREAN	\$0.00	\$1,200.00
BROKEN ARROW, NEW LIFE	\$1,107.98	\$905.00
BROKEN ARROW, SEQUOYAH CREEK	\$1,544.00	\$1,158.00
BROKEN ARROW, SOUTH BA	\$4,862.06	\$11,171.34
BROKEN ARROW, SUNNYSIDE	\$2,157.30	\$2,848.50
BROKEN ARROW, VIETNAMESE	\$900.00	\$2,100.00
CATOOSA, NEW COVENANT	\$0.00	\$0.00
CLAREMORE, KING ROAD	\$0.00	\$400.00
COLLINSVILLE, EASTSIDE	\$474.59	\$832.82
COLLINSVILLE, FIRST	\$49,860.42	\$57,788.41
COLLINSVILLE, SPEAK LIFE MEADOWVIEW	\$0.00	\$0.00
COWETA, COMMUNITY	\$50,405.38	\$36,970.22
COWETA, CROSSPOINT	\$2,529.95	\$1,250.00
COWETA, JACKSON GROVE	\$0.00	\$0.00
GLENPOOL, FIRST	\$9,974.28	\$7,679.68
GLENPOOL, SOLID ROCK	\$0.00	\$295.50
INOLA, TRINITY	\$0.00	\$0.00
JENKS, BEAVER STREET	\$4,126.21	\$4,911.32
JENKS, FIRST	\$176,351.39	\$116,131.82
JENKS, SOUTHSIDE	\$661.77	\$519.50
LEONARD, FIRST	\$0.00	\$0.00
MANNFORD, FIRST	\$2,035.83	\$103.94
MANNFORD, NEW HOPE	\$4,757.84	\$4,469.74

Church	2024	2023
MOUNDS, LIBERTY	\$3,118.20	\$3,344.48
MUSKOGEE, NEW COMMUNITY	\$0.00	\$0.00
OAKHURST	\$0.00	\$0.00
OWASSO, BETHEL	\$62.00	\$62.50
OWASSO, CENTRAL	\$32,256.36	\$40,875.28
OWASSO, COWBOY UP	\$0.00	\$0.00
OWASSO, DALTON HILL	\$5,340.10	\$5,480.65
OWASSO, FIRST	\$75,574.98	\$76,629.63
OWASSO, FREEDOM	\$600.00	\$600.00
OWASSO, THE REFUGE	\$3,826.95	\$7,797.42
SAND SPRINGS, ANGUS ACRES	\$5,332.68	\$4,448.33
SAND SPRINGS, BROADWAY	\$4,990.88	\$18,142.06
SAND SPRINGS, CALVARY	\$561.43	\$552.71
SAND SPRINGS, CHURCH THAT MATTERS	\$4,783.05	\$6,493.12
SAND SPRINGS, HILLSPRING	\$1,002.00	\$1,002.00
SAND SPRINGS, KEYSTONE HILLS	\$0.00	\$0.00
SAND SPRINGS, LIMESTONE	\$1,561.53	\$1,574.09
SAND SPRINGS, THE FATHER'S HOUSE	\$0.00	\$0.00
SAND SPRINGS, TRINITY	\$0.00	\$0.00
SAPULPA, CHURCH INSIDE OUT	\$5,331.72	\$6,029.12
SAPULPA, COALITION CHURCH	\$0.00	\$0.00
SAPULPA, FAITH	\$5,337.54	\$5,073.79
SAPULPA, FIRST	\$40,929.34	\$85,977.83
SAPULPA, FOUNDATION	\$0.00	\$0.00
SAPULPA, NATIVE STONE	\$4,985.21	\$4,662.15
SAPULPA, THE WAY	\$250.00	\$350.00
SKIATOOK, IMMANUEL	\$600.00	\$600.00
SKIATOOK, LAKEVIEW SOUTHERN	\$8,124.32	\$3,223.15
SKIATOOK, RIVETED CHURCH	\$500.00	\$1,000.00
SPERRY, FIRST	\$678.80	\$737.42
TULSA, BELVIEW	\$852.74	\$1,067.91
TULSA, BERRYHILL	\$631.64	\$3,089.70
TULSA, BRADEN PARK	\$335.00	\$270.00
TULSA, BROOKSIDE	\$0.00	\$0.00
TULSA, CANYON ROAD	\$1,481.77	\$1,315.85
TULSA, CHURCH INSIDE OUT AT RED FORK	\$5,331.73	\$0.00
TULSA, COGNIZANT	\$0.00	\$1,350.00
TULSA, CONCORD	\$0.00	\$200.00
TULSA, EASTON HEIGHTS	\$3,394.24	\$4,008.94
TULSA, EASTWOOD	\$14,610.32	\$24,935.85
TULSA, FIRST	\$190,595.70	\$225,093.01
TULSA, FIRST KOREAN	\$0.00	\$0.00
TULSA, FIRST SLAVIC	\$0.00	\$300.00
TULSA, GARDEN CITY	\$0.00	\$0.00
TULSA, GARNETT ROAD	\$3,500.04	\$3,188.89
TULSA, GILCREASE HILLS	\$200.00	\$300.00
TULSA, GOOD NEWS CHURCH	\$250.00	\$0.00
TULSA, HARBOR OF GRACE CHURCH	\$1,500.00	\$9,917.00
TULSA, HARVARD AVENUE	\$650.00	\$0.00
TULSA, HISPANIC AGAPE	\$0.00	\$612.43
TULSA, HOPE FELLOWSHIP	\$0.00	\$0.00
TULSA, IGLESIA BAUTISTA EL CAMINO	\$0.00	\$1,200.00
TULSA, IGLESIA BAUTISTA EMMANUEL	\$1,559.48	\$2,597.91
TULSA, IGLESIA EVANGELICA	\$0.00	\$0.00
TULSA, INDIAN FELLOWSHIP	\$0.00	\$0.00
TULSA, INTERNATIONAL	\$500.00	\$760.00
TULSA, LAMB	\$0.00	\$0.00
TULSA, LIVING HOPE CHURCH	\$0.00	\$0.00
TULSA, LIVING WATER	\$0.00	\$0.00
TULSA, MEMORIAL	\$45,600.69	\$44,254.03
TULSA, MERCYVIEW	\$0.00	\$0.00
TULSA, MYANMAR ZOMI	\$3,671.11	\$3,604.71
TULSA, NEW HOPE COMMUNITY	\$0.00	\$0.00
TULSA, NEW JOY FELLOWSHIP	\$125.00	\$150.00
TULSA, NOGALES AVENUE	\$600.00	\$733.34
TULSA, OAKRIDGE	\$0.00	\$0.00
TULSA, OKLAHOMA HMONG	\$0.00	\$0.00

Church	2024	2023
TULSA, OLIVET	\$41,614.21	\$43,782.83
TULSA, OWEN PARK	\$0.00	\$0.00
TULSA, PALARBAS DE VIDA	\$25.00	\$0.00
TULSA, PARKVIEW	\$38,865.43	\$36,121.35
TULSA, PENIEL	\$0.00	\$0.00
TULSA, PRIMERA IGLESIA BAUTISTA HISPANA	\$0.00	\$0.00
TULSA, RANCH ACRES	\$7,920.00	\$7,200.00
TULSA, RESTORATION CHURCH OF BOWDEN	\$0.00	\$6,679.26
TULSA, RIDGE CREST	\$851.71	\$0.00
TULSA, RIVENDELL FELLOWSHIP	\$0.00	\$0.00
TULSA, ROSE OF SHARON	\$0.00	\$0.00
TULSA, SEQUOYAH HILLS	\$800.00	\$800.00
TULSA, SKELLY DRIVE	\$5,661.81	\$6,228.45
TULSA, SOJOURN	\$0.00	\$0.00
TULSA, SOUTH TULSA	\$218,629.66	\$207,763.03
TULSA, SOUTHERN HILLS	\$3,494.15	\$5,590.75
TULSA, SOUTHWOOD	\$28,924.09	\$29,271.09
TULSA, SPRINGDALE	\$25.00	\$100.00
TULSA, SPRINGS OF GRACE	\$0.00	\$0.00
TULSA, THE MISSION	\$0.00	\$0.00
TULSA, TRINITY	\$21,732.79	\$14,688.41
TULSA, TULSA HILLS	\$0.00	\$0.00
TULSA, TURN CHURCH	\$200.00	\$100.00
TULSA, VIEW ACRES	\$6,754.72	\$4,509.91
TULSA, WINNETKA HEIGHTS	\$0.00	\$0.00
TULSA, WOODLAND ACRES	\$25,643.29	\$18,570.91
TULSA, ZION COMMUNITY	\$977.00	\$1,106.00
TULSA, ZOMI	\$447.56	\$1,156.10
Totals	\$1,745,888.83	\$1,753,326.58

Union Association

BLANCHARD, AGAPE	\$1,594.34	\$1,742.00
BLANCHARD, COLE FIRST	\$4,315.87	\$2,915.26
BLANCHARD, CROSSROAD TO LIFE	\$665.62	\$413.01
BLANCHARD, FIRST	\$53,799.22	\$47,434.31
BLANCHARD, NEW LIFE	\$0.00	\$37.00
DIBBLE, FIRST	\$0.00	\$0.00
GOLDSBY	\$0.00	\$0.00
LEXINGTON, ACTS 2	\$389.00	\$1,139.22
LEXINGTON, CORBETT	\$0.00	\$0.00
LEXINGTON, CORNERSTONE	\$1,387.85	\$963.39
LEXINGTON, FIRST	\$29,669.00	\$31,641.57
LINDSAY, BANNER	\$2,146.06	\$2,429.57
LINDSAY, CRINER	\$0.00	\$665.00
LINDSAY, PAYNE	\$4,053.15	\$3,454.18
LITTLE AXE, FIRST	\$851.00	\$0.00
MOORE, ELEVATE	\$1,800.00	\$1,800.00
MOORE, FIRST	\$161,368.32	\$157,767.04
MOORE, FIRST INDIAN	\$0.00	\$1,005.28
MOORE, FIRST MOORE EN ESPANOL	\$0.00	\$0.00
MOORE, HIGHLAND	\$6,638.42	\$4,931.97
MOORE, REGENCY PARK	\$29,884.00	\$30,406.00
MOORE, SOUTHMOORE	\$9,417.35	\$7,959.46
MOORE, THE WELL	\$600.00	\$100.00
NEWCASTLE, FIRST	\$106,957.79	\$99,380.85
NEWCASTLE, NEW LIFE	\$0.00	\$0.00
NEWCASTLE, WOODLAND HILLS	\$52,731.68	\$51,316.36
NOBLE, ETOWAH	\$1,150.68	\$1,563.25
NOBLE, FIRST	\$18,259.12	\$16,735.11
NOBLE, MAGUIRE	\$5,343.00	\$4,597.00
NOBLE, TWELVE CORNERS	\$4,521.00	\$4,096.00
NORMAN, ALAMEDA	\$7,868.00	\$6,245.00
NORMAN, BETHEL	\$60,334.66	\$58,219.73
NORMAN, BLUE LAKES	\$0.00	\$6,149.14
NORMAN, CHINESE	\$2,400.00	\$1,200.00
NORMAN, COMMUNITY	\$0.00	\$0.00
NORMAN, CORNERSTONE INDIAN	\$0.00	\$0.00
NORMAN, EL BUEN PASTOR	\$0.00	\$172.83
NORMAN, ENTERPRISE	\$787.86	\$1,039.89

Church	2024	2023
NORMAN, FIRST	\$25,673.92	\$30,924.79
NORMAN, FRANKLIN	\$16,712.35	\$18,838.01
NORMAN, GRACE FELLOWSHIP	\$120.00	\$120.00
NORMAN, HILLTOP	\$1,749.94	\$1,749.96
NORMAN, HOPE COMMUNITY	\$0.00	\$0.00
NORMAN, IMMANUEL	\$17,203.23	\$19,926.61
NORMAN, KOREAN	\$1,200.00	\$2,400.00
NORMAN, LAKEVIEW	\$1,424.57	\$1,154.74
NORMAN, MAGNIFY	\$3,094.79	\$0.00
NORMAN, NEW LIFE BIBLE	\$200.00	\$200.00
NORMAN, NORTHEAST	\$11,867.00	\$11,172.50
NORMAN, PARADIGM	\$2,499.96	\$2,499.96
NORMAN, PRIMERA HISPANA	\$1,694.82	\$1,662.00
NORMAN, PROVIDENCE ROAD CHURCH	\$0.00	\$0.00
NORMAN, REDEEMER	\$2,916.67	\$2,083.35
NORMAN, RIVER	\$2,450.00	\$2,100.00
NORMAN, STEPPING STONES	\$0.00	\$0.00
NORMAN, THUNDERBIRD	\$681.00	\$1,525.00
NORMAN, TRINITY	\$0.00	\$0.00
OKC, CHRIST COMMUNITY	\$4,500.00	\$3,750.00
OKC, EMMAUS	\$55,697.41	\$49,999.98
OKC, FAITH CROSSING	\$0.00	\$0.00
OKC, GRACEWAY	\$1,000.00	\$6,000.00
OKC, SOUTH LAKES	\$8,702.88	\$6,999.88
OKC, SOUTHPARK	\$7,330.16	\$7,264.48
OKC, THE WELL	\$0.00	\$0.00
PURCELL, EMMANUEL	\$4,665.05	\$6,083.12
PURCELL, FIRST	\$35,767.56	\$40,770.23
PURCELL, FIRST HISPANIC	\$0.00	\$0.00
PURCELL, JOHNSON ROAD	\$594.95	\$987.50
PURCELL, NEW HOPE SOUTHERN	\$956.00	\$745.95
PURCELL, STARTING GATE COWBOY	\$0.00	\$0.00
PURCELL, UNION HILL	\$7,500.00	\$6,250.00
TUTTLE, SNOW HILL	\$0.00	\$2,500.00
WASHINGTON, FIRST	\$13,501.14	\$7,602.37
WAYNE FIRST	\$1,361.01	\$1,644.22
Totals	\$799,997.40	\$784,474.07

Washington-Osage Association

AVANT	\$11,944.98	\$6,646.32
BARNSDALL, FIRST	\$5,062.72	\$4,398.33
BARNSDALL, VICTORY	\$829.25	\$913.60
BARTLESVILLE, EASTERN HEIGHTS	\$15,845.04	\$13,733.18
BARTLESVILLE, FIRST	\$52,620.89	\$36,509.37
BARTLESVILLE, GREATER FIRST	\$700.00	\$700.00
BARTLESVILLE, HIGHLAND PARK	\$28,409.41	\$18,652.63
BARTLESVILLE, IGLESIA BAUTISTA	\$0.00	\$0.00
BARTLESVILLE, LABADIE HEIGHTS	\$2,012.00	\$1,659.00
BARTLESVILLE, NEW HARMONY	\$10,324.00	\$10,684.00
BARTLESVILLE, SILVER LAKE	\$390.04	\$445.45
BARTLESVILLE, SOUTHERN	\$32,502.00	\$32,502.00
BARTLESVILLE, TRINITY	\$407.71	\$705.72
BARTLESVILLE, VIRGINIA AVENUE	\$1,715.55	\$1,556.34
CHAUTAUQUA, NEW LIFE	\$289.08	\$470.46
COPAN, FIRST	\$0.00	\$0.00
DEWEY, BLUESTEM	\$0.00	\$0.00
DEWEY, FIRST	\$19,221.92	\$19,853.15
DEWEY, ROSE HILL	\$1,667.00	\$3,690.00
HOMINY, FIRST	\$6,113.39	\$5,775.50
LENAPAH, FIRST	\$0.00	\$0.00
NOWATA, FIRST	\$12,936.00	\$14,128.00
OCHELATA, FIRST	\$0.00	\$0.00
PAWHUSKA, CALVARY	\$1,649.99	\$1,955.99
PAWHUSKA, FIRST	\$10,356.24	\$10,539.01
PAWHUSKA, LYNN	\$817.52	\$882.59
PAWHUSKA, NELAGONEY	\$1,500.00	\$951.00
PAWHUSKA, OSAGE INDIAN	\$0.00	\$0.00
PAWHUSKA, WHIPPOORWILL	\$744.88	\$625.98

Church	2024	2023
PRUE, FIRST	\$9,987.76	\$6,952.18
RAMONA, FIRST	\$26,956.01	\$24,010.92
SKIATOOK, FIRST	\$48,865.91	\$53,532.64
SKIATOOK, TRI-COUNTY	\$815.00	\$1,260.00
VERA, FIRST SOUTHERN	\$3,760.61	\$2,941.12
WANN, FIRST	\$501.30	\$525.03
WYNONA, FIRST	\$0.00	\$1,125.00
Totals	\$308,946.20	\$278,324.51

Western Oklahoma Association

ARAPAHO, FIRST	\$1,140.37	\$1,316.11
BESSIE	\$1,185.00	\$1,229.75
BURNS FLAT, FIRST	\$0.00	\$0.00
BUTLER, FIRST	\$0.00	\$0.00
CANUTE, FIRST	\$432.79	\$534.40
CLINTON, CUSTER AVENUE	\$0.00	\$408.55
CLINTON, FIRST	\$21,422.75	\$18,151.93
CLINTON, TABERNACLE OF WORSHIP	\$0.00	\$250.00
CORDELL, FIRST	\$21,553.55	\$19,629.24
CORN, CALVARY	\$439.94	\$419.50
CUSTER CITY, FIRST	\$600.00	\$600.00
DILL CITY, FIRST	\$2,480.54	\$2,689.73
FOSS, FIRST	\$4,779.95	\$5,821.00
GOTEBO, FIRST	\$2,027.28	\$2,016.66
HOBART, FIRST	\$23,799.63	\$18,733.27
HOBART, TERRITORY COWBOY	\$1,652.74	\$1,786.44
HOBART, WASHINGTON STREET	\$1,658.00	\$342.00
LONE WOLF, FIRST	\$1,141.00	\$642.00
MOUNTAIN VIEW, FIRST	\$11,348.28	\$11,810.60
ROCKY, SALEM	\$478.64	\$540.16
SENTINEL, FIRST	\$5,509.54	\$13,555.07
TALOGA, FIRST	\$2,525.68	\$1,614.75
THOMAS, FIRST	\$18,322.68	\$20,981.79
WEATHERFORD, EMMANUEL	\$10,965.41	\$15,822.72
WEATHERFORD, FIRST	\$87,804.98	\$85,120.62
WEATHERFORD, TRINITY	\$4,133.62	\$5,361.33
Totals	\$225,402.37	\$229,377.62

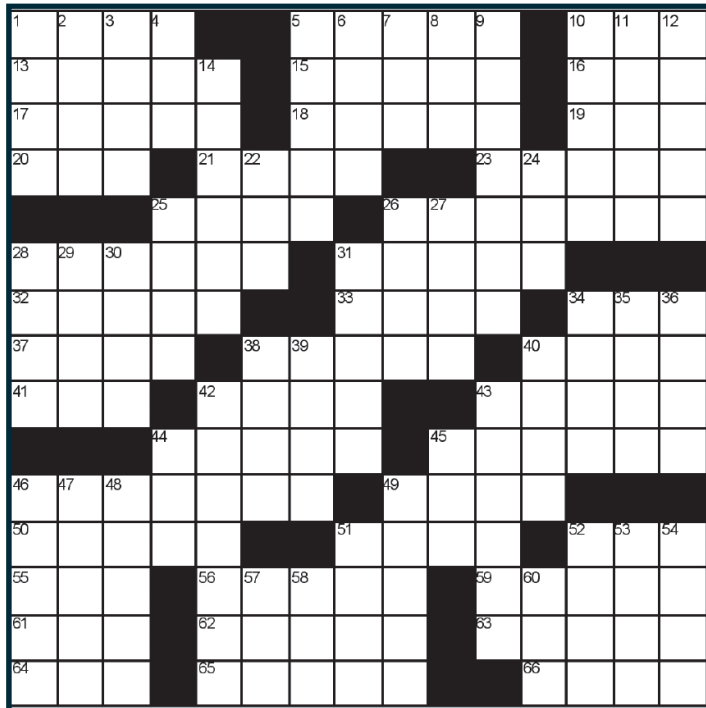
No Associational Affiliation

ADA, TRINITY HISPANIC	\$274.90	\$693.48
ARDMORE, WOW	\$250.00	\$200.00
BIXBY, BEMO	\$0.00	\$0.00
BIXBY, TULSA AWAKENING	\$0.00	\$0.00
BLANCHARD, NEW BEGINNINGS	\$3,503.32	\$5,466.00
BUNCH, ROCK FENCE	\$0.00	\$0.00
CHOCTAW, THE BRANCH	\$268.00	\$0.00
CLINTON, HISPANA SION	\$0.00	\$0.00
COUNCIL HILL, COUNTRYSIDE	\$0.00	\$0.00
DAVIDSON, FIRST	\$2,230.43	\$1,160.16
DEL CITY, JESUS IS LORD MISSIONARY	\$100.00	\$0.00
DUNCAN, RECOVERY	\$400.00	\$400.00
EDMOND, COFFEE CREEK	\$250.00	\$250.00
EDMOND, FRONTLINE	\$11,000.00	\$11,000.00
EDMOND, GATEWAY	\$0.00	\$0.00
EDMOND, KOREAN	\$0.00	\$0.00
EDMOND, LEGACY FAMILY	\$0.00	\$0.00
EDMOND, REDEMPTION	\$1,500.00	\$0.00
EUFULA, EKKLESIA	\$40.00	\$30.00
EUFULA, FIRST	\$0.00	\$1,862.00
FELT, PRIMERA MISSION	\$0.00	\$0.00
FREDERICK, HISPANA	\$1,036.00	\$1,284.00
GARVIN, WATERIN' HOLE	\$0.00	\$0.00
GORE, NOTCHIETOWN	\$0.00	\$0.00
GROVE, CROSSWIRED COWBOY	\$2,400.00	\$1,800.00
HASKELL, BENDED KNEE COWBOY	\$0.00	\$0.00
HASKELL, MOUNT ZION	\$150.00	\$0.00
HAYWORTH, BOKHOMA	\$0.00	\$0.00
HITCHITA, GRAVE CREEK INDIAN	\$0.00	\$0.00
HOBART, DAW-TOW-KOOT	\$0.00	\$0.00

Church	2024	2023
HOLDENVILLE, CEDAR RIVER	\$400.00	\$300.00
HULBERT, NEW HOPE FIRST INDIAN	\$0.00	\$0.00
JONES, LIVING WORD	\$993.73	\$336.88
KEIFER, RISEN LIFE	\$0.00	\$0.00
KEOTA, BETHEL INDIAN	\$0.00	\$0.00
KINGFISHER, IGLESIA BAUTISTA EMANUEL	\$888.88	\$1,210.85
LAWTON, COMMUNITY	\$0.00	\$0.00
LAWTON, DAYSRING	\$0.00	\$0.00
LAWTON, FIRST CHINESE	\$0.00	\$0.00
LAWTON, HOPE	\$6,970.80	\$0.00
LAWTON, LEGACY FAITH & FAMILY	\$0.00	\$0.00
LAWTON, PROVIDENCE	\$0.00	\$0.00
LINDSAY, LIVING SANCTUARY	\$0.00	\$0.00
MADILL, CROSS-N-SPURS COWBOY	\$0.00	\$0.00
MAYSVILLE, COWBOY	\$300.00	\$300.00
MIAMI, HISPANIC MISSION	\$0.00	\$0.00
MIAMI, NUEVA VIDA	\$205.47	\$140.82
MOORE, TRANSITIONAL	\$0.00	\$0.00
MOUNDS, SNAKE CREEK 1	\$0.00	\$0.00
MULDROW, NEW	\$0.00	\$25.00
MUSKOGEE, EKKLESIA	\$0.00	\$240.00
MUSKOGEE, FIRST MISSIONARY	\$0.00	\$0.00
MUSTANG, THE WELL	\$200.00	\$0.00
MWC, FRESH FIRE	\$0.00	\$0.00
NOBLE, FREEDOM BIKER	\$0.00	\$0.00
NORMAN, THE CHURCH AT NORMAN	\$0.00	\$0.00
NOWATA, HIS LIFE	\$0.00	\$0.00
OKC, ANTIOCH FELLOWSHIP	\$425.00	\$210.00
OKC, CHRIST CENTRAL	\$0.00	\$0.00
OKC, CHURCH OF THE JOURNEY	\$0.00	\$0.00
OKC, CITY LIGHT	\$0.00	\$0.00
OKC, CONVERGENCE (DBA FUSION)	\$0.00	\$0.00
OKC, CROWN HEIGHTS	\$0.00	\$0.00
OKC, E-CHURCH	\$0.00	\$0.00
OKC, EMMANUEL	\$200.00	\$0.00
OKC, FAITH HOPE AND LOVE MISSIONARY	\$250.00	\$0.00
OKC, FRONTLINE DOWNTOWN	\$11,000.00	\$11,000.00
OKC, FRONTLINE SOUTH	\$11,000.00	\$11,000.00
OKC, GRACE COMMUNITY	\$0.00	\$1,000.00
OKC, GREATER BETHEL	\$0.00	\$0.00
OKC, IGLESIA COMUNIDAD DE FE	\$100.00	\$50.00
OKC, LIVING WORD	\$205.00	\$345.00
OKC, MIRACLE TEMPLE	\$0.00	\$0.00
OKC, NEW HOPE	\$300.00	\$300.00
OKC, NORTHEAST FELLOWSHIP	\$0.00	\$0.00
OKC, REAL	\$0.00	\$0.00
OKC, SENTRAL	\$0.00	\$0.00
OKC, ST. JOHN MISSIONARY	\$200.00	\$150.00
OKC, THE PARISH	\$0.00	\$0.00
OKC, TOGETHER CHURCH	\$867.43	\$503.06
OKC, UNITY CHRISTIAN	\$25.00	\$0.00
OKC, URBAN	\$0.00	\$0.00
OKEMAH, GREENLEAF	\$0.00	\$0.00
OWASSO, REDEEMER BIBLE	\$0.00	\$0.00
PONCA CITY, NEW LIFE	\$0.00	\$0.00
POTEAU, FUEL	\$0.00	\$0.00
RED OAK, BETH-EL	\$4,991.60	\$3,954.94
SALINA, FREEDOM	\$2,302.93	\$0.00
SALLISAW, PINE TREE	\$0.00	\$0.00
SAND SPRINGS, DELAWARE	\$1,390.38	\$1,389.38
SEMINOLE, SNAKE CREEK #2	\$120.00	\$80.00
SHAWNEE, CENTRAL CITY	\$0.00	\$0.00
SHAWNEE, FRONTLINE	\$11,000.00	\$11,000.00
SHIDLER, THE CHURCH	\$0.00	\$0.00
SLICK, FAITH	\$0.00	\$0.00

Church	2024	2023
SOUTH COFFEYVILLE, FIRST	\$0.00	\$0.00
STERLING, CROSS TRAILS	\$0.00	\$0.00
STILLWATR, MEHAN UNION	\$0.00	\$0.00
STILWELL, ANTIOCH	\$0.00	\$0.00
STILWELL, EMMANUEL	\$0.00	\$566.09
STILWELL, SYCAMORE SPRINGS	\$0.00	\$0.00
SULPHUR, MIDWAY HILL	\$6,886.64	\$6,026.03
TALIHINA, PINE GROVE	\$0.00	\$0.00
TULSA, IGLESIA BIBLICA BAUTISTA	\$300.00	\$0.00
TULSA, GREATER NEW GROVE	\$0.00	\$0.00
TULSA, KUKI WORSHIP SERVICE TULSA	\$0.00	\$0.00
TULSA, LOGOS CHURCH	\$0.00	\$0.00
TULSA, NEW OPPORTUNITY	\$0.00	\$0.00
VERDIGRIS, CHURCH INSIDE OUT	\$100.00	\$0.00
WATTS, BALLARD	\$50.00	\$0.00
WAURIKA, CROSS BRAND COWBOY	\$0.00	\$1,772.00
WESTVILLE, JUBILEE	\$0.00	\$0.00
WICHITA, DISCOVER	\$3,257.00	\$0.00
WYNNEWOOD, EASTERN GATE	\$255.90	\$244.61
YUKON, FRONTLINE	\$11,000.00	\$11,000.00
Totals	\$99,588.41	\$87,290.30

CROSSWORD



ACROSS

- 1 What Jesus calmed in Matthew 8
 5 Fake chocolate
 10 Pay __
 13 Where Paul preached in Greece, often
 15 Auto make
 16 __ Baba
 17 "___ of me" (Matt. 11:29)
 18 "I send you forth as __ in the midst of wolves" (Matt. 10:16)
 19 Swine
 20 They "___ him away to crucify him" (Matt. 27:31)
 21 Enter at the straight __
 23 "Go...and __ all nations" (Matt. 28:19)
 25 One descended at Jesus' baptism
 26 Fryer
 28 Changeable
 31 Rationalism
 32 "Phantom of the __"
 33 "Come unto me...and I will give you __" (Matt. 11:28)
 34 Gravestone letters
 37 Paul would have made one
 38 What 52 Across does
 40 "His __ did shine as the sun" (Matt. 17:2)
 41 The __ of the world, Matthew 24 subject
 42 Tropical bird

WORDSEARCH

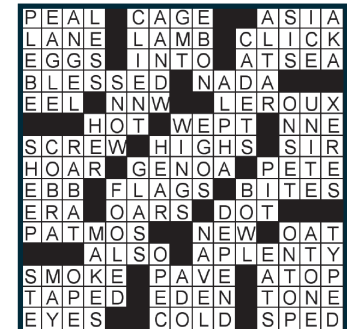
Z U L T V I R W S R E B M I T S S O R C N Z O M F
 F A C S W N N V D A P P B F E G E Q O C B B W T N
 K E W I G S B O S N H I E N N A S N O I T A N F P
 L I E O I F G D B R B I V G M O P S J D Z D U P A
 V X N S T R I F V L L I N C R E D I B L E N K C D
 Z I E L Q K G P I E R B G F Z S S A L E S O T H O
 N W D Z W G L C R O S R E L A T I O N S H I P R R
 A P A K P R A R N R L W Y J R D A P M C V G N Y O
 I T M U Z L E M S U G V V E U V U L K I C S S L Q
 Y Z E K O T E N S O E R N O Y K X R T T V T B Q Q
 K S A L S N O E S E Q G A X J R V I K N B A N Q B
 H O Y A T I S P D D T T X A E F E Q H E W F A I Z
 A J S R S B E C F H Y J V Z S S E C F H O F T W K
 F I L I X L A T E I J R J Q U O N D K T R E U W I
 D U C R O M J N G G R O U P S D W N X U D R R M S
 W E P Z P C E X Q T F I B L E P A H C A U S E B N
 D G Y R W D O D D O J H C R U H C S E B I R T M R

Note: The word clues are chosen by Messenger staff, while the puzzles and letters surrounding the clues are computer-generated at random.

- 43 Strongly suggests
 44 Oregon capital
 45 Bogus
 46 Snacks for 9 Down
 49 Fool built a house on it
 50 Where Mary and Joseph fled
 51 Bog
 52 "Ears to hear, __ him hear" (Matt. 11:15)
 55 Gentleness (Abbr.)

DOWN

- 1 Offered to Jesus on the cross
 2 "African Queen" screenwriter James
 3 "Each one should carry their own __" (Gal. 6:5 niv)
 4 Fall into sin
 5 Social position
 6 Hurt
 7 Herb Pharisees would tithe
 8 Unrefined metal
 9 John the __
 10 Of the Vatican
 11 Wonderland girl
 12 Don't hide yours under a bushel
 14 African nation
 22 "___ Maria"
 24 Tree
 25 "I did cast them out as the __ in the streets" (Ps. 18:42)
 26 What the sower sows
 27 Judas betrayed Jesus with one
 28 What's we see in our brother's eye
 29 Jesus' tomb on the third day
 30 Flex
 31 "Being warned of God in a __" (Matt. 2:12)
 34 Prego's competition
 35 57 Down choice
 36 Mexican money
 38 "How long __ ye between two opinions?" (1 Kings 18:21)
 39 "Their __ were opened" (Matt. 9:30)
 40 Flintstone man
 42 You can't serve two
 43 "___ and World Report"
 44 "I will come in...and will __ with him" (Rev. 3:20)
 45 Average, on the golf course
 46 Free (2 words)
 47 Eyed
 48 Rotation
 49 Signal
 51 Plateau
 52 Old Italian money
 53 Sponsorship
 54 "Where is he __ is born King of the Jews?" (Matt. 2:2)
 57 Beverage
 58 Hovel
 60 The light of the body, in Matthew 6:22



LAST MONTH ANSWERS

WORDS

- CAMP NATURE
 DECISIONS FUN
 KIDS NATIONS
 CHAPEL ENVIRONMENT
 CROSTIMBERS JESUS
 GROUPS MADE NEW
 AUTHENTIC RELATIONSHIP
 CHURCH WORD
 BIBLICAL INCREDIBLE
 STRENGTHENED STAFFERS
 LESOTHO GOSPEL
 DISASTER RELIEF ACTIVITIES
 TRIBES

Church NEWS

CHURCH FINANCE CONFERENCES SET

WatersEdge is hosting the 2024 Church Finance Conferences at Owasso, First on Oct. 1 and Oklahoma City, Southern Hills on Oct. 3. There's also an option to attend the conference online on Oct. 1. More information and registration are at www.WatersEdge.com/CFC24. Also, the registration fee for the two in-person events is \$20 off through July 31.

SWOSU BSU/BCM CENTENNIAL CELEBRATION OCTOBER 25-26

The Southwestern Oklahoma State University (SWOSU) BSU/BCM will celebrate 100 years, Oct. 25-26 highlighted by a banquet (No cost, please RSVP) and celebration at 5:30 p.m., Fri., Oct. 25 and Homecoming gathering and parade in conjunction with the SWOSU Homecoming football game, Oct. 26. For further information, contact Scott Hume at 580-772-2377.

TRIBUTE

Ruth Cotton, 99, died June 21.

She and her husband, Tom, served five state churches and ministered in Enon Association for 20 years. They worked as gatekeepers at Falls Creek for 23 years and helped direct children's camp for 19 years. Ruth went on 30 mission trips with the International Mission Board.



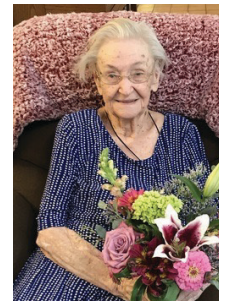
Victor Orta, 86, died July 11.

He was a long-time minister in Tulsa and champion for Oklahoma's Hispanic community. He planted 20 churches and founded 25 Hispanic Ministry Centers for the Baptist General Convention of Oklahoma (BGCO), and was a home missionary for the Southern Baptist Convention. He served on several committees of the Tulsa Baptist Network, Tulsa Metropolitan Ministries and the BGCO. In 1998, The Tulsa World acknowledged Orta as one of the 100 most influential people during Tulsa's first century. In 2008, he was named Honorary Mayor of Oklahoma City.



Helen Marie Patterson, 107, died Jan. 22.

She was the wife of retired pastor Lester Patterson, with whom she served in Oklahoma in Native American ministry. She was a leader and officer in Pottawatomie-Lincoln Association Woman's Missionary Union for 23 years. Gifts in memory of "Mrs. P," as she was affectionately called may be made to Shawnee, Salateeska, 45703 Garrett's Lake Rd., Shawnee, OK, 74804, or to the Lester and Helen Patterson Scholarship Fund at OBU.



Pat Turner of Skiatook died July 20.

He had served as a disaster relief chaplain since 2005.

Vera Faye Cox died May 21.

She was the wife of Tom Cox (74 years), who was pastor at Lawton, Letitia; Shawnee, Fairview; Ramona, First; Valliant, First; Ninnekah, First; and Ponca City, First, and was Director of Missions in Washington-Osage Association.

Faith Comes By Hearing

*"So then, faith comes by hearing,
and hearing by the Word of God"*
Romans 10:17

Bible Conference

OCTOBER 6
10:30am/6:00pm
OCTOBER 7 - 9
6:30pm each night



Bill Britt



Roc Collins



Fred Luter



Jerry Chaddick



Ricky Capps



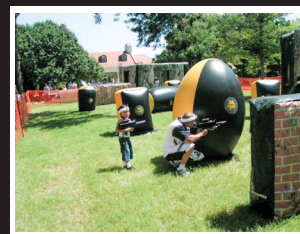
Music By:
Master's Voice



Sunnylane Baptist Church
4500 SE 31st Street • Del City, OK 73115
Phone: 405-677-0591

MOBILE LASER FORCES.COM

AWESOME LASER TAG!! ANYWHERE - ANYTIME!



LASER TAG GAMES FOR ALL AGES!

WE COME TO YOU.

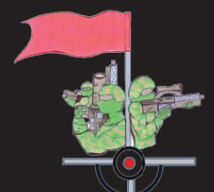
Birthday Parties • Sports Teams
Church Groups

Any and all events

**INDOORS OR
OUTDOORS**

Ages 6 to 80

Very Affordable



405-259-9300

MINISTRY



IN FOCUS

AUGUSTA "GUS" SMITH
Director, Native Praise Choir



Can you talk about how you got involved in music and how you got involved in the Native Praise Choir?

I have always loved singing. As a little girl, my cousin and I used to compete on who could sing the loudest in church. We also used to compete on who knew the most songs in the hymn book. In high school, I joined a choir, but my teacher didn't encourage me, and I felt inferior. Yet in my college years at Bacone College, I was encouraged to join the Bacone Choir and was immediately accepted and loved every minute of it. The choir served as ambassadors for the college, so we traveled to many areas of the United States. When Native Praise was organized in 1999, I had recently returned to Oklahoma, after living out of state for almost 25 years. I was in the very first group of ladies that Willene Pierce gathered to sing hymns in our tribal languages for the Oklahoma WMU Annual Meeting. There were 50 of us.

For those who may be less familiar, can you describe the Native Praise Choir?

The Native Praise Choir is unique in many ways. When we first began singing together, Willene approached the WMU organizations of the five Indian Baptist Associations in Oklahoma. At the WMU Annual Meeting, we sang in three groups. The Muscogee Creek and Seminole women sang a hymn in the Muscogee language, the Chickasaw and Choctaw women sang a hymn in the Choctaw language, and the Cherokee women in the Cherokee language. When Willene accepted an invitation from Wanda Lee at National WMU to sing at the National WMU Celebration in 2002 at St. Louis, we realized that we needed an official name for our choir. We became Native Praise, a music ministry of the Native American LINK. At that point in time, we had 130 women. We began working on everyone in the choir learning to sing the hymns of the three languages of the Five Civilized Tribes of Oklahoma. Today, we have 44 choir members who represent 25 Oklahoma churches and 17 tribal nations.

Can you talk about the Native American LINK Ministry?

Willene Pierce was the founding executive director-treasurer of the Native American LINK Inc. The Native American LINK, Inc. is a Baptist ministry focused on the Native American women in our Native Baptist congregations across Oklahoma designed to help women grow spiritually, strengthen family life and develop personal skills. LINK signifies "Living In Neighborly Kindness." It



is primarily a women-to-women approach. It may link women from one tribe to another, from one church to another, non-Native to Native, older women to younger women and those with specific ministry skills.

With the 25th Anniversary of the Native Praise Choir here, can you talk about the tour?

Our Anniversary tour was intended as a celebration of the endurance of the choir. The week before we left on our tour, our Native Praise Choir was featured in an article in the WMU missions magazine (July 2024 issue). That was a surprise and an honor. Thirty people were able to travel on this tour. Our stops included singing at Greenfield, Ind., Calvary, where the guest speaker was the SBC President, Bart Barber. That was a God-thing, totally unplanned (by us)! Then, we sang at the National WMU Missions Celebration and Annual Meeting. We were honored to have Wanda Lee, National WMU Executive Director-Treasurer Emerita and National WMU

President Emerita bring the commissioning of the Native Praise for the next 25 years. While at the SBC Convention, the choir was invited to sing at the Fellowship of Native American Christians annual meeting.

We completed our tour singing at Selbyville, Del., Fenwick Island; Walnut Hills, Va., and Moro, Ark. We were able to include some stops to the Lincoln Presidential Museum in Springfield, Ill., Hershey, Pa., a bus tour of Amish country in Lancaster County, Pa., a drive down the Eastern Shore tunnel to Virginia Beach. We have made many friends throughout these areas of travel, so it was great to and share about our ministry and culture of our Native American people.

What are some of the most rewarding aspects of this ministry?

The best part of this ministry is the genuine, sincere sisterhood of the women of many tribal nations. If it were not for the Native American LINK ministry bringing us together to sing together, to minister together, and to be on mission together, we may have never made the friendships we share today. My personal joy is seeing them share hugs, prayers, tears, and best of all, laughter. Each woman has a story of her own. It is exciting to have young women and preteens who have joined the choir. They are our hope. When we sing these tribal hymns, something happens. God's voice is heard in these hymns. Most of our hymns are those that carried our people during a very difficult time in history, the Trail of Tears. We do not forget that. We pray that these hymns will continue to be sung until Jesus returns.



A NEW PERSPECTIVE

I have lived the “city life” for all of my 56 years. Even while serving in the Army, my family always lived on base or the nearby city. Whether it has been Dallas/Fort Worth, Washington D.C., Columbia S.C., Honolulu, or Tulsa, we have always lived where there has been a haze of the city wherever we looked.

Until now.

Now we live in the country. Northeast Coweta. No street lights. No neighbors behind us. The sunrise and sunset look different. I can see the stars at night...all of them! In short, it’s peaceful. We only needed to back up from the city a bit to see things in a whole new perspective.

The last two plus years have given me a whole new perspective on Oklahoma Baptists. As I trek the central area of Oklahoma, visiting with pastors and fellowshiping with associations, I see Baptist life differently. Backing up a bit has a way of bringing clarity.

Clarity has come to me in these areas:

- We have much more in common than we have differences. Sure, we have some theological nuance, various methods, even a few different sizes, but we share much more in common. Foremost, we are Gospel people!
- Our churches love their pastors. Of course there are ornery people! But spend a hot minute talking to the lay people in Oklahoma Baptist churches and you will find out quick that they love and are proud of their pastors! Being a pastor is THE highest calling. THESE are the heroes. THESE are the leaders. They give their lives to shepherd the flocks, and we love them for it.

- We sacrifice much more than I knew. Oklahoma Baptist churches want to give, want to see the Gospel taken to the edges of the world, want to see ministries thrive in their churches, in their associations, in their state conventions, and around the world...and they are willing to give until it hurts.
- Love for the church and pastors pours out in abundance from those who serve at the state convention and associations, from our affiliates, from our university (Zip, Bang, OBU!). These folks genuinely want to see the church “win.” It amazes me to see how tirelessly these great people work together for the fame of Jesus and the good of the local church.
- We are a grateful group. We know God’s mercy and kindness. We have received the grace of Jesus. We know that we are blessed. We have seen the Lord’s provision again and again. We know it is nothing we have achieved or earned. Every blessing is from our Father. Everywhere my tires take me, I hear how grateful Oklahoma Baptists are to be Oklahoma Baptists.

Yes, I have a new perspective. And just like at my new home, I love having a back porch view to the beauty of who we are as Oklahoma Baptists.



Andy Taylor
*Oklahoma Baptists
East Central Regional
Ministry Partner*

MISSIONARY

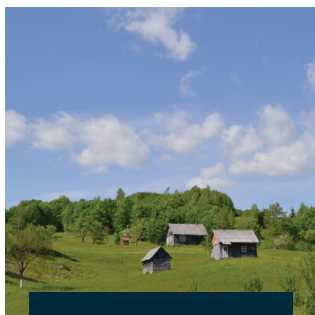
Prayer Guide

Join us throughout the year in praying for our missionaries, serving locally and around the world!

Who & Where

Why

How to Pray



Faye Mueller

CENTRAL ASIA

Pray for Faye Mueller as she serves with the International Mission Board in Central Asia. Faye works to empower churches to lead local ministry, share the Gospel with Muslims, and disciple new believers. Faye has met people who have survived being stoned for their faith, who have lost their jobs or children for their faith, and who are boldly sharing the Word despite the suffering.

Pray God would grant strong faith, unity and provision for local believers.

Pray Faye's desire to remain in the power of Christ and His Word will be strong.

Pray many new believers will come from Islam and Hinduism.



Indian Falls Creek

OKLAHOMA

Every year, campers representing more than 50 Native American tribes and more than 250 churches gather at Falls Creek to participate in worship services, classes, and activities that are designed to engage people ages preschool to adult. The purpose of this yearly event is to foster and promote Christian training, inspiration, fellowship, evangelism, and missionary zeal among the Indians in their Baptist church life.

Pray many campers will receive a calling to reach out and serve in their home communities or into special ministry.

Pray campers will better understand Christ's work in their lives.

Pray campers will address the needs and concerns they find around them at home.



Jason Yarbrough

BRAZIL

Jason Yarbrough serves as the Disaster Relief and Chaplaincy Ministry Partner. He strives to enlist people to become involved, to equip them to serve well, to empower them to do the ministry and to encourage them along the way. Disasters or crisis situations open the door for spiritual conversations. Jason says of disaster relief volunteers, "Their willingness and eagerness to serve the Lord is very refreshing and allows us to advance the Gospel with each disaster."

Pray more Oklahoma Baptists will join disaster relief ministry.

Pray volunteers will step into leadership positions to strengthen the ability to respond to disasters.

Pray God will give Jason the ability to balance the demands of work and the need for family time.



Shannon Cross

OKLAHOMA

Shannon Cross serves as the Baptist Collegiate Ministry (BCM) director at Rogers State University. He helps students discover where they are in their walk with Jesus and learn to walk closer with Him. He enjoys seeing college students discover through the BCM that God has a much bigger plan for them than they ever thought. He delights in seeing college students take their faith seriously and become faithful witnesses for Christ after college.

Pray Shannon would have godly success and favor on the college campus.

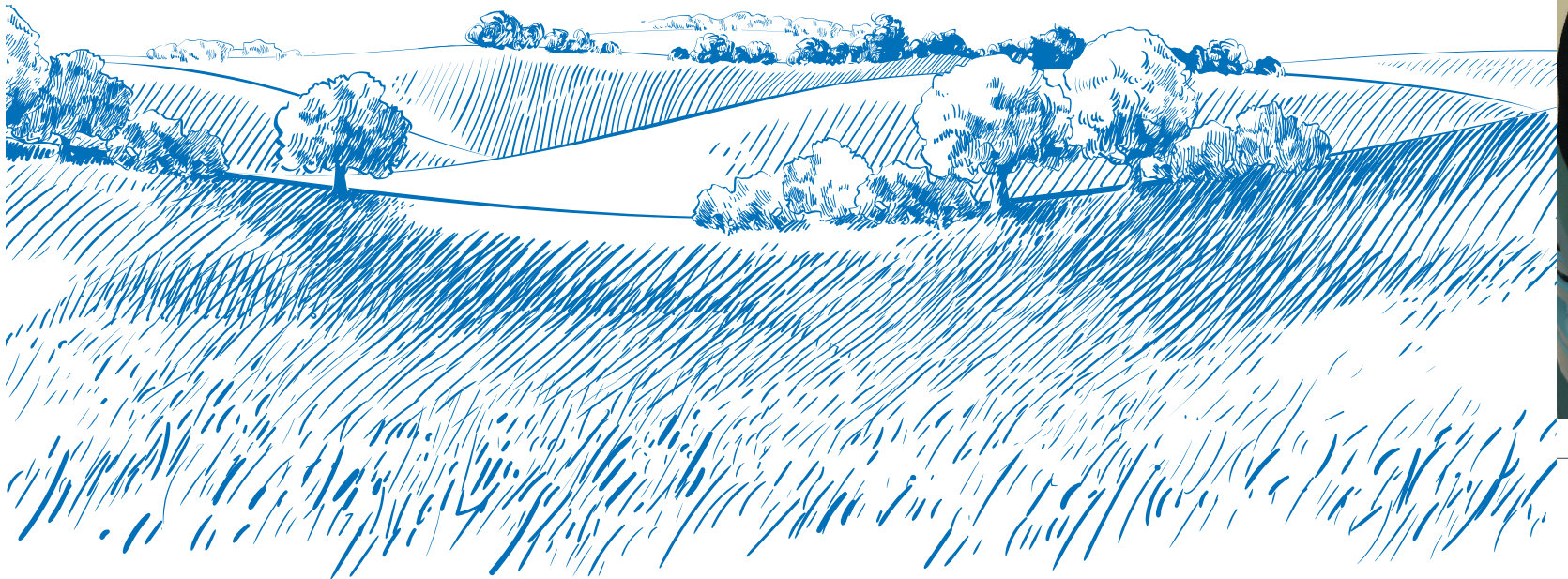
Pray God would give Shannon wisdom and humility in leading the ministry at the university.

Pray God would help Shannon reach out to the international students on campus and that He would send more.



Blessed to Give

'IT IS MORE BLESSED TO GIVE THAN TO RECEIVE.'



EDNA MCMILLAN
**State Missions
Offering**

SEE THE IMPACT OF YOUR GIVING
[OKLAHOMABAPTISTS.ORG/SMO](https://oklahomabaptists.org/smo)





GREAT OPPORTUNITY FOR COUPLES TO SERVE TOGETHER IN MINISTRY



Oklahoma Baptist Homes for Children (OBHC) is actively seeking Christian, servant-minded, married couples who want a great mission career opportunity to serve as houseparents. OBHC has campuses in Madill, Owasso and Edmond.

Houseparents receive housing and salary plus excellent benefits including medical, life and disability insurance and retirement. Full tuition scholarships for Southwestern Theological Seminary are also available. Interested couples can learn more and apply online at www.obhc.org/houseparents. Both husband and wife must fill out an application.

For questions, contact Jim Lehw at
405.514.5710 or email **HR@obhc.org**.

OBHC 
Oklahoma Baptist Homes for Children



SCAN HERE



GIVE MORE.

DO MORE.

SAVE MORE.

**WITH A WATERSEGE
DONOR ADVISED FUND**

Grow your charitable giving through a Donor Advised Fund (DAF) and financially support your favorite ministries even more. A WatersEdge DAF provides you with tax advantages, flexibility in giving, and low fees — even a fee-free option. And we handle all the paperwork, allowing you to maximize your gift with ease!

WatersEdge.com/DAF • 800-949-9988

